

# Waynesburg Republican

Published Weekly — Read Daily — Since 1833

VOLUME CXLVI NUMBER 19

WAYNESBURG, PA., FRIDAY, AUGUST 20, 1982

A GOOD HOME NEWSPAPER

SINGLE COPY 15¢

## Blue Gives Up Seat On C. Greene Board

By Christy R. Molzon, Staff Writer

WAYNESBURG — Delmont Blue resigned as school director of the Central Greene School Board at its meeting Tuesday night.

Blue's resignation came in a letter to Board President Francis Fox and is effective immediately. Fox stated he had only received the letter Tuesday.

Blue's letter read, "Reasons will follow in the newspapers to let the taxpayers know I have not let them down. I find it impossible to serve in a situation not in the interests of the taxpayers or in the academics." Blue has not attended a board meeting since the re-organizational meeting December, 1981. The school board accepted his resignation unanimously.

The director's position must be filled in 30 days or someone will be appointed by the court. The person must be a resident of Wayne, Whiteley or Perry Townships. Persons interested should contact Walter Stout at the business office for an application, which should be returned by Aug. 30.

Archie Trader and John Hughes, representing the Quarterback Club, asked if the lights for the athletic field would be erected in time for the first home football game.

Walter Stout said the lighting contract which was awarded in May specified a job completion date of Aug. 27 but there was no penalty clause in the contract. Stout said he had contacted the factory and the lighting poles are not scheduled to be manufactured until the middle of the next month with delivery expected on Sept. 27. The board is hoping to have the lights up the first week of October. "It appears that three of the five home games will not be played under the lights if we don't have a delivery date until Sept. 27," Superintendent Dr. Ronald Ferrari said.

In a related matter, a policy on the use of the high school field for district sports, band activities, and outside organizations was approved. The board also made appointments to the sports staff. (See related story on the sports pages.)

The district has been fined \$3,700 by the Department of Education for the time when a teacher let his certification elapse during the 1978-79 term. Stout said attempts were made at the time to get an emergency certification for the teacher but it was not received and he had to be replaced. The money will be taken from the basic instructional payment for the district.

The board gave its approval to a pre-algebra class for selected seventh and eighth grade students; to an agreement with Tele-Media Co. for installation of television cable at East Franklin School; awarded \$11,425 in bids for television equipment for a high school course; approved \$1,600 for a required asbestos study and \$2,837 for the action plan for the Long Range Plan.

Recent negotiations with the Central Greene Professional Education Association has brought about changes in hiring procedures and a salary scale for professional employees. Employees now get full credit for prior public school teaching upon initial hiring. A new salary scale was set up for beginning teachers and long-term substitutes in the district. The action, it was noted, was taken to attract teachers and remain competitive with surrounding districts.

Approval given was: step I, level A, \$12,050; step I, level B, \$12,350; step I, level C, \$12,550; step I, level D, \$12,750.

The policy also allows for salary adjustments when advanced degrees are earned. It was noted that any employee hired since Aug. 1, 1979, and who qualifies for his salary status to be adjusted may submit documenta-

tion to the superintendent this year.

Long-term substitutes were granted the same fringe benefits as regular teachers. The per-day substitute salary was raised to \$45 and regular part-time employees are to be paid \$30 a day.

An agreement has been made between the administration and the Central Greene School Service Personnel Association to fill part-time cafeteria positions with currently employed cafeteria personnel according to seniority. These employees will receive benefits except for Blue Cross/Blue Shield, dental and life insurance.

Linda McCracken, a teacher in the district for 17 years, was named principal of East Ward, Whiteley, Spraggs and Perry Elementary Schools.

In other personnel matters, the board granted a leave of absence to Janet McDougal for the first semester, accepted the resignation of Marleen Salisbury as math instructor at the high school and of Mary McNelly, teacher at Spraggs; rescinded leave of absence for Susan Cleavenger; granted a leave of absence to Debra Borelli for the 1982-83 school term.

Appointed were Lori Butt Aldhizer

as a temporary professional employee; Sherry Kaye Peters as a part-time art industrial arts instructor at the Middle School; Natalie Santini as a per diem substitute at Spraggs; Marion Corey as a long-term substitute at East Franklin School; Elizabeth Madden as a long-term substitute at East Franklin; Jodi Lynn Miller as a long-term substitute at East Franklin; Kelley Benjak as a long-term substitute at East Ward; Sandra Gehringer to the Title I reading program at the Middle School; Lori E. McElheny as a temporary employee in vocal music at East Franklin and Margaret Bell; Tamara Davis as part-time employee at Spraggs; Norma S. Conley as part-time Title I reading program instructor at Spraggs; Jonathan Shriver as a long-term substitute in math at the Middle School; Nancy Fox part-time kindergarten employee; Margaret Bizub as long-term substitute in math at the high school; Mary Moore as a long-term substitute at Spraggs; Jane Madden as dental hygienist at \$10 an hour; Jan Brunell as elementary instructor at East Ward; Suzanne Nixdorf as a long-term substitute in elementary art; Debra Yurisko as an elementary instructor at Perry.

## Beef, Lamb Sale Highlights Fair

WAYNESBURG — More than \$54,000 was realized through the sale of animals at the annual 4-H Baby Beef and Market Lamb sale held Thursday evening as a highlight of the Greene County Fair.

The 36 steers which were owned brought their owners \$45,043, for an average of \$1.13 per pound. The 43 lambs sold for \$9,627.50, for an average of \$2.22 per pound.

Matt Belding, son of Mr. and Mrs. Richard Belding of Waynesburg R.D.2, had both the grand champion steer and the grand champion lamb.

The steer was bid in at \$3 per

pound (\$3,570) by Gene Yost of Mt. Morris and Douglas Black of Garards Fort. The lamb was purchased for \$5 per pound (\$510) by Don Patterson of Patterson Realty, Waynesburg. Both prices were better than last year, when the champion steer went for \$2.25 and the lamb for \$4.

The lamb sale average was also increased when Auctioneer Charles (Bud) Behm announced that he would make up the difference for any lamb club member who received less than \$2 per pound. There were eight of them.

The reserve champion steer was shown by Tracy Walls, daughter of Mr. and Mrs. Dale Walls of Waynesburg R.D.3.

The reserve champion steer, owned by Scott Adamson, son of Mr. and Mrs. Ralph Adamson of Brave Star Route, was bid in for \$4.75 per pound (\$484.50) by Mooney Acres.

## Man Found Guilty In Dog Killing

WAYNESBURG — Charles E. Spitznogle of Waynesburg R.D.3 was found guilty in a non-jury trial before Judge Glenn Toothman of charges that he shot and killed two coon dogs owned by Vincent Sappington of Pine Bank and Don Cowell of Spraggs R.D. 1.

Spitznogle was charged with shooting the dogs after they cornered a raccoon in a corn crib near his home on July 6, 1981. Spitznogle was later admitted to the ARD program after he agreed to replace the dogs with animals of comparable value.

However, the three men could not reach an agreement. Sappington and Cowell originally asked \$3,500 and \$2,500 respectively, claiming they had paid \$1,200 and \$1,000 for the dogs in 1979 and had incurred the cost and trouble of training them.

With the failure to reach agreement, Spitznogle's attorney James Hook asked that his client be withdrawn from the ARD program and be given a non-jury trial.

Spitznogle will be sentenced at a later date.

## Pedestrian Killed Near Fairgrounds

Harry A. Cree, 83, of 354 Willow Road, Franklin Township, was struck and killed by a car at 11:20 p.m. Thursday on Route 21 near the Greene County Fairgrounds while walking to his home about a mile away.

Cree, who retired as district manager of the South Penn District of Mid-Penn Telephone Company after a 33-year career, had just left the 4-H Baby Beef and Lamb Sale where he purchased two head of beef.

According to state police, Cree stepped off the median strip into the path of a vehicle operated by Kirk A. King, 17, of 1130 Park Avenue, Waynesburg, who was traveling east.

According to Greene County Coroner Frank Behm, Cree apparently became confused with all the lights in the area and stepped into the traffic lane.

Behm said he contacted the state Department of Transportation officials Friday morning to inquire about the possibility of placing "no parking" signs along both sides of Route 21 from the interstate to the Foodland intersection.

Behm said no inquest is planned because several witnesses to the accident reported King was traveling no more than 30 miles per hour at the time of the accident.



Observer-Reporter / Stan Diamond

## Lazy Days Of August

With many of the softball and baseball leagues having completed their seasons, and several of the fairs and festivals of summer just another memory, the lazy days of August have begun. They are the long, often hot days before a new school year begins, the final long summer weekend, and the routine of the remainder of the year begins. It is a time for sitting in shade for long idle moments. This area near the breastwork of the Wiscarver reservoir near Waynesburg has provided such a setting for many fishermen with only a passing interest in having a fish nibble at their line to disturb their idle thoughts.

## Mine Rescue Contest To Open Coal Show

CARMICHAELS — The opening event for the State Bituminous Coal Show in Carmichaels will again be the Pennsylvania State Mine Rescue contest.

The contest is sponsored by the state Bituminous Safety Association and will be held Saturday, Aug. 21, on the Carmichaels Area High School athletic field.

Beginning at 9:15 a.m., the field positions will be as follows:

Pennsylvania Mines Corp. No. 1 team; Isabella Mine; Bethlehem Mines No. 3; Florence Mine No. 1; Helen Mine, Homer City team; Florence Mine No. 2; J&L Steel, Nema-colin Mine; R&P Coal, Keystone No. 1; BCNR Mining Corp., Clyde Mine; BCNR Mining Corp., Newfield Mine.

Also, U.S. Steel, Frick No. 1; Duquesne Light Co., Warwick No. 1; R&P Coal, Keystone No. 2; Pa. Mines Corp. No. 2; GM&W Coal Co. No. 1; Emerald Mines A team; Emerald Mines B team; Bethlehem Mines No. 2; Mathies No. 2; R&P Coal, Helvetia team; Duquesne Light Co., Warwick Mine No. 2; BCNR Mining

Corp., Russelton Mine; U.S. Steel, Cumberland 2 and Consol Renton

## Ohio Couple Hit By Truck

Two pedestrians from Ohio were struck by a pickup truck Monday night at the Mt. Morris Exit of Interstate 79 South.

Taken to West Virginia University Hospital, Morgantown, for treatment were Van Ashley Mason, 20, and his wife, Tina Marie, 17, of Jefferson, Ohio.

A hospital spokesman said Mason suffered a possible fractured ankle, abrasions and cuts. According to police, his wife received a sprained knee.

Police said the driver of the truck, Bradley Paul Fox, 26, of Mt. Morris, was exiting the highway when he noticed three people on the ramp.

Fox told police he swerved to the right and applied his brakes, but two of the people ran to the berm directly in the path of his truck.

Mine.

Companies presenting trophies this year will be Keystone Bituminous Coal Association, first place; CSE Corp., second place; National Mine Service Co., third place and Mine Safety Appliance Co., fourth place.

Official opening of the 29th coal show will be held at 8:30 a.m. Stephen McCann will serve as master of ceremonies and the invocation will be asked by the Rev. Bernard L. Shuey, pastor of the First United Methodist Church of Carmichaels.

The presentation of the national colors and the national anthem will be led by Nema-colin Junior Troop 3159, Girl Scouts of America, under leadership of Karen Sacco and Helen Myers, official proclamation will be given by Sara L. Ruth, president of the King Coal Association.

Welcome will be given by Earl Lamont, president of the Pennsylvania Bituminous Safety Association followed by introduction of guests and officials of UMWA District 2, Ebensburg and also District 4, Ma-sontown and District 5, Belle Vernon.

## 20 Townships Will Share Cost Of 911 System

WAYNESBURG — The Greene County 911 Communications Board, at an informal meeting Tuesday, informed a sprinkling of township supervisors that costs of the new 911 system will probably have to be shared next year between the county's 20 townships.

At the present time, the county-wide system is being supported by Carmichaels and Waynesburg Boroughs, Cumberland Township, all of which have police departments and the county.

The new system, which will probably go into effect by October 15, will enable residents of the county, re-

gardless of where they live, to obtain fire, police and emergency services by calling 911. Currently, the emergency numbers are listed throughout the phone book. For example, there are 76 separate numbers listed for the county's 16 fire companies.

In most other areas of the country, the emergency number is 911 but because of limitations of the local phone company, residents in the outlying parts of the county would have to make a toll call thereby requiring the "1" before dialing 911. Cost of the tolls will be absorbed by the phone company.

In addition, Mid-Penn Telephone

will no longer have local operators beginning in October. Board officials pointed out that should someone report a fire on Sugar Run to the operator in the phone company offices in Kittanning, the operator would have no idea where Sugar Run was located in Greene County. It was also pointed out that a stranger traveling through the county could come across an emergency and not know who to call or the location of the emergency when seeking aid.

Cost of the emergency network is expected to be about \$65,000. In the past, the county has been paying most of the expense with Waynesburg

Borough paying about \$9,000, Cumberland Township about \$2,300 and Carmichaels Borough, \$2,800.

Board members are aware that municipalities who have police departments using the radio system should pay more than townships with no police; however, because citizens in all municipalities will be making use of the emergency system all should pay a share of the costs.

Although the board feels the county should determine the per capita contribution, they suggested the possibility of the three communities with police departments paying \$25,000 of the \$65,000 costs and

then because there about 40,000 residents in the county, all municipalities pay perhaps \$1 per resident toward the new system.

Although each of the 20 townships were invited to send a representative, only five townships were represented. Board members felt the cost-sharing proposal should be presented at this time because township budget meetings are scheduled for the near future.

Mike Molholland, a member of the board for several years, noted that communication costs to the various fire departments in the county are around \$35,000 annually. This cost

could be eliminated under the new system and instead of townships donating this amount to fire companies, the revenue could be used in supporting the new system.

Molholland also noted an agreement is near with Mountain State Telephone Company to allow over 1,000 residents of the Cameron, W.Va. area who live in Greene County but have Mountain State services to also join the system.

The final agreement for the new system must be approved by the state police in Harrisburg before the final draft is presented to the Greene County Commissioners.

# Jefferson-Morgan Schools Open August 30

JEFFERSON — Officials in the Jefferson-Morgan School District have announced that starting and ending times for classes for the 1982-83 school term to begin Monday, Aug. 30 have been established and will be the same as the previous year.

Secondary classes in the district will begin at 8 a.m. and end at 2:46 p.m. Elementary classes will begin at 8:30 a.m. and conclude at 3:20 p.m. Bus schedules have been revised to meet this year's needs, according to school officials.

Bus schedules have been posted at various locations throughout the school district including the Jefferson Post Office, Mather Post Office, J. & R. Corner Store at Mather, Rices

Landing Post Office, Rices Landing Bank, Dry Tavern Drive-In Band, Davis Giant Market, Clarksville Post Office, Clarksville Meat and Grocery Store, Clarksville-Reesman's Sunoco, Joe's Grocery Store at Chartiers, and the 77 Market located across from Greene County Memorial Park.

School officials urged all students or their parents to check the schedules for the bus runs their concern them. They said that the bus schedules for outlying areas of the school district such as Homeville, Castile Run, Sharpnack's Hollow, and the Lippencott area will be very similar to last year's for both secondary and elementary because of the distance of the bus route.

All students from Clarksville will be picked up near the old Beglin Feed Store for students on the north side of Main Street and at the Clarksville Borough building for students living on the south side of town. Kindergarten students attending the morning sessions will be taken to school on the regular school bus and returned home after 11:10 a.m. by a special bus. Kindergarten students enrolled in the afternoon session will be brought to school on the special afternoon bus and returned home on the regular afternoon bus.

The bus pick up for the afternoon kindergarten session will be at 11:50 a.m. for bus 202 beginning at Home-

ville and along the Homeville Road for students Bedilion, Price Taylor, Holzworth, Kiger, McCrear, Sands, Phillips, Smith, and Virgili, and along Sharpnack Hollow for students Kemp and Shaffer to the elementary school.

Bus 241 will begin at 11:40 a.m. along Castile Run, Funks Road, Gordon Loop, Y-Choff Trailer Court, Brown's Run area, and Kurtz Trailer Court to the elementary school. Bus 229 will start at 11:50 a.m. from Clarksville-Dry Tavern Road, Pitt Gas, Clarksville, G.I. Town, Braden, Burson, Chartiers, Center Loop, and Rogers Hill to the elementary school.

School officials said parents

should be able to judge the time a bus would reach their location by its starting time and route. Any adjustments or changes in the bus schedule for any of the routes will be made during the first two or three day of school with persons affected by the changes notified.

Students are requested not to drive cars to school for the first three days so that bus loads can be established. It was also noted by district officials that if a student intends to ride a bus only during bad weather conditions the student's presence on that particular bus must be established within the first three days of school in order to be able to ride the bus any given time during the school year.

Kindergarten or elementary students who lived on the south side of Jefferson Borough, Pine Street towards Havers Hill and Washington Street areas will be picked up by bus 228. Students living on Greene Street between Washington and Pine Streets should board the bus on either of those streets or at the intersections of Pine and Greene Streets or Washington and Greene Streets. This particular run on the posted bus schedules is described as run two for bus 228.

All elementary students walking from the Jefferson area are being asked by school officials to use the sidewalk on the right side of the road leading to the high school building and elementary school.

## Central Greene District Prepares For School Year

WAYNESBURG — School for students in the Central Greene School District will start Monday, Aug. 30. A faculty in-service day will be held Friday, Aug. 27.

### Remodel Request Rejected

WAYNESBURG — In a short meeting Monday night, the Waynesburg Borough Zoning Board rejected one request and tabled another.

The board had received a request from Edward M. Poach to remodel the second floor of a building at 148 South Cumberland Street. Poach indicated the area would be used for office space.

The request was rejected because zoning codes prohibit professional offices in an R-1 district. The board has not yet received an appeal from Poach.

A request from David Blue to construct a 10-foot by 15-foot addition to a frame garage at 172 Locust Alley was tabled.

Although the garage is in a light business (M-1) district, the board stated it needed to know the adjoining property owners before giving its approval. The board said if additional drawings or information are received from Blue the request can be finalized before the next month's meeting.

Due to Labor Day, the board will meet on the third Monday of September — Sept. 20.

A letter was sent to Jerry Minolas asking him to attend the next meeting to finalize the agreement on his East Street property.

### Costly Road Repair Is Done By Mistake

WIND RIDGE — Residents in Aleppo Township are thankful for a major renovation to Township Road 312 due to the efforts of the Richhill Township supervisors who were fooled about the boundary line between the two western Greene County townships.

The road, already in bad condition, had been made worse by a recent slide. The worst area was about 1,400 feet north of the Richhill Township boundary marker. Richhill subsequently spent some \$10,000 on the project constructing new culverts, cutting away the slide and resurfacing the road.

While the work was being done, a local resident stopped and questioned the workers asking, "Aren't you guys from Richhill Township?" Admitting they were, the workers were told they were working in the wrong township.

The taxpayer was reminded the township sign was several hundred feet down the road but he maintained the sign was wrong.

To make sure, Richhill officials

School officials are requesting that parents register kindergarten and first-grade students (who have not previously attended school) for the coming term. To be eligible for kindergarten, a child must be 5 years old prior to Oct. 1, and first-grade students must be 6 years old prior to Oct. 1.

The student's birth certificate and immunization record must be presented at the time of registration. The state Department of Health requires the following immunizations for a child to enter school for the first time:

Three or more doses of DPT or DT toxoid;

Three or more doses of trivalent oral polio vaccine;

One dose of regular measles vaccine (or medical verification of the disease);

One dose of rubella (German Measles) vaccine;

One dose of mumps vaccine.

Parents of new elementary enrollees should register their children at the elementary school serving the parents' residence area. For information concerning the district's attendance areas and / or transportation arrangements, parents should contact Walter Stout at 627-8151.

Listed below are the times classes will start and finish at the various schools:

Waynesburg Central High School, 8:15 a.m. — 2:59 p.m.

Margaret Bell Miller Middle School, 8:30 a.m. — 2:50 p.m.

East Ward School, 8:30 a.m. — 2:50 p.m.

East Franklin School, 8:30 a.m. — 2:50 p.m.

Perry School, 8:20 a.m. — 2:45 p.m.

Spraggs School, 8:30 a.m. — 2:50 p.m.

Whiteley School, 8:30 a.m. — 2:50 p.m.

Those students who walk should not arrive before 8:15 a.m. Parents taking new students to school for the first day are requested to stop in the school office to determine the bus the child will ride home.

Transportation routes and bus stops will be basically the same as the previous school year. Students should board their bus at the previously established bus stop and at the regular time. Parents will be notified if there has been a change in their child's bus stop or pickup time.

Class assignments for Margaret Bell Miller Middle School will be posted in the following areas: grade 5 — third-floor hallway bulletin board; grade 6 — second-floor hallway bulletin board adjacent to the auditorium, and grades 7 and 8 — commons area bulletin board next to the cafeteria.

Room assignments for Waynesburg Central High School for the school year are as follows:

Seniors

Homeroom 117, Mr. Born, Richard Lynn Adams to Bruce Brewer;

101, Mrs. Albert, Bonnie K. Brown to Sharon Fetterman;

102, Mrs. Buttermore, Sally Jean Filla to James Douglas Henderson;

103, Mrs. Shultz, Michael Herman to Robert Keith Logan;

105, Mrs. Berryhill, Thomas David Majernik to Lisa Ann Patterson;

library, Mr. Nader, Rebecca Patterson to Donald Lee Snyder;

Homeroom 117, Mr. Born, Richard Lynn Adams to Bruce Brewer;

101, Mrs. Albert, Bonnie K. Brown to Sharon Fetterman;

102, Mrs. Buttermore, Sally Jean Filla to James Douglas Henderson;

103, Mrs. Shultz, Michael Herman to Robert Keith Logan;

105, Mrs. Berryhill, Thomas David Majernik to Lisa Ann Patterson;

library, Mr. Nader, Rebecca Patterson to Donald Lee Snyder;

Homeroom 117, Mr. Born, Richard Lynn Adams to Bruce Brewer;

101, Mrs. Albert, Bonnie K. Brown to Sharon Fetterman;

102, Mrs. Buttermore, Sally Jean Filla to James Douglas Henderson;

103, Mrs. Shultz, Michael Herman to Robert Keith Logan;

105, Mrs. Berryhill, Thomas David Majernik to Lisa Ann Patterson;

library, Mr. Nader, Rebecca Patterson to Donald Lee Snyder;

Homeroom 117, Mr. Born, Richard Lynn Adams to Bruce Brewer;

101, Mrs. Albert, Bonnie K. Brown to Sharon Fetterman;

102, Mrs. Buttermore, Sally Jean Filla to James Douglas Henderson;

103, Mrs. Shultz, Michael Herman to Robert Keith Logan;

105, Mrs. Berryhill, Thomas David Majernik to Lisa Ann Patterson;

library, Mr. Nader, Rebecca Patterson to Donald Lee Snyder;

Homeroom 117, Mr. Born, Richard Lynn Adams to Bruce Brewer;

101, Mrs. Albert, Bonnie K. Brown to Sharon Fetterman;

102, Mrs. Buttermore, Sally Jean Filla to James Douglas Henderson;

103, Mrs. Shultz, Michael Herman to Robert Keith Logan;

105, Mrs. Berryhill, Thomas David Majernik to Lisa Ann Patterson;

library, Mr. Nader, Rebecca Patterson to Donald Lee Snyder;

Homeroom 117, Mr. Born, Richard Lynn Adams to Bruce Brewer;

101, Mrs. Albert, Bonnie K. Brown to Sharon Fetterman;

102, Mrs. Buttermore, Sally Jean Filla to James Douglas Henderson;

103, Mrs. Shultz, Michael Herman to Robert Keith Logan;

105, Mrs. Berryhill, Thomas David Majernik to Lisa Ann Patterson;

library, Mr. Nader, Rebecca Patterson to Donald Lee Snyder;

Homeroom 117, Mr. Born, Richard Lynn Adams to Bruce Brewer;

101, Mrs. Albert, Bonnie K. Brown to Sharon Fetterman;

102, Mrs. Buttermore, Sally Jean Filla to James Douglas Henderson;

103, Mrs. Shultz, Michael Herman to Robert Keith Logan;

105, Mrs. Berryhill, Thomas David Majernik to Lisa Ann Patterson;

library, Mr. Nader, Rebecca Patterson to Donald Lee Snyder;

Homeroom 117, Mr. Born, Richard Lynn Adams to Bruce Brewer;

101, Mrs. Albert, Bonnie K. Brown to Sharon Fetterman;

102, Mrs. Buttermore, Sally Jean Filla to James Douglas Henderson;

103, Mrs. Shultz, Michael Herman to Robert Keith Logan;

105, Mrs. Berryhill, Thomas David Majernik to Lisa Ann Patterson;

library, Mr. Nader, Rebecca Patterson to Donald Lee Snyder;

Homeroom 117, Mr. Born, Richard Lynn Adams to Bruce Brewer;

cafeteria, Mr. Berryhill and Mr. Cappellini, John Edwin Snyder to Dolly Louise Zupper.

Juniors

Homeroom 107, Miss Dulaney, Jerry Wayne Adams to David Lee Cain;

108, Mrs. Cleavenger, Paul Gary Cain to Scott Ely;

109, Mr. Hunnell, Jennifer Ann Espenshade to Jeffrey Paul Hawk;

110, Mr. Ayersman, Kimberly Ann Hickman to Teresa Ann Lebanno;

111, Mrs. L. Stiles, Daniel Ray Lemley to Larry Allen Faugh;

112, Mrs. Franks, Alexandria Ann Pavick to Allison Smitley;

113, Mr. Faddis, Lesa Carol Spitznogle to Steven Michael Tuggle;

114, Mr. Miner, Lorna Dell Varner to Stephen Douglas Zollars.

Sophomores

Homeroom 201, Miss Yanachik, Randy Allen Arbogast to William Cah;

202, Mr. Kindervater, Bradley Calvert to Thomas Allen Farabee;

203, Mrs. Kayla, Maggie Sandina Faulkner to Rebecca A. Hawk;

204, Mr. Anderson, Darrell Wayne Headley to Raymond Lockart;

205, Mr. Ganocy, Karl Kevin Main to Amy Jean Osso;

206, Mr. Adamson, George Patterson to Barbara Shipley;

207, Mr. Hardy, Charles Allen Shriver to Lea Ann Tennant;

209, Mr. Zorosky, Stephen Porter

Tennant to Gerald Lee Zupper.

Freshmen

Homeroom 210, Mr. Winter's, Melissa Jewel Ackley to Thomas P. Churney;

211, Mr. Caruso, James Douglas Cline to Bonnie Lou Farabee;

212, Mr. McCurdy, John K. Fowler to Joselyn Ann King;

213, Mrs. S. Cole, Timothy Lynn King to Jonnie Dee McCallister;

214, Miss Bizup, Mary Michelle McCay to Lisa Renee Patten;

215, Mrs. J. Cole, Barbara Patterson to Stella Marie Shultz;

216, Mr. Haberl, Annette Louise Simpson to Lisa M. Torri;

219, Mrs. Keller, Debbie L. Trader to Tamatha Mae Yoder.

Homeroom 210, Mr. Winter's, Melissa Jewel Ackley to Thomas P. Churney;

211, Mr. Caruso, James Douglas Cline to Bonnie Lou Farabee;

212, Mr. McCurdy, John K. Fowler to Joselyn Ann King;

213, Mrs. S. Cole, Timothy Lynn King to Jonnie Dee McCallister;

214, Miss Bizup, Mary Michelle McCay to Lisa Renee Patten;

215, Mrs. J. Cole, Barbara Patterson to Stella Marie Shultz;

216, Mr. Haberl, Annette Louise Simpson to Lisa M. Torri;

219, Mrs. Keller, Debbie L. Trader to Tamatha Mae Yoder.

Homeroom 210, Mr. Winter's, Melissa Jewel Ackley to Thomas P. Churney;

211, Mr. Caruso, James Douglas Cline to Bonnie Lou Farabee;

212, Mr. McCurdy, John K. Fowler to Joselyn Ann King;

213, Mrs. S. Cole, Timothy Lynn King to Jonnie Dee McCallister;

214, Miss Bizup, Mary Michelle McCay to Lisa Renee Patten;

215, Mrs. J. Cole, Barbara Patterson to Stella Marie Shultz;

216, Mr. Haberl, Annette Louise Simpson to Lisa M. Torri;

219, Mrs. Keller, Debbie L. Trader to Tamatha Mae Yoder.

Homeroom 210, Mr. Winter's, Melissa Jewel Ackley to Thomas P. Churney;

211, Mr. Caruso, James Douglas Cline to Bonnie Lou Farabee;

212, Mr. McCurdy, John K. Fowler to Joselyn Ann King;

213, Mrs. S. Cole, Timothy Lynn King to Jonnie Dee McCallister;

214, Miss Bizup, Mary Michelle McCay to Lisa Renee Patten;

215, Mrs. J. Cole, Barbara Patterson to Stella Marie Shultz;

216, Mr. Haberl, Annette Louise Simpson to Lisa M. Torri;

219, Mrs. Keller, Debbie L. Trader to Tamatha Mae Yoder.

Homeroom 210, Mr. Winter's, Melissa Jewel Ackley to Thomas P. Churney;

211, Mr. Caruso, James Douglas Cline to Bonnie Lou Farabee;

212, Mr. McCurdy, John K. Fowler to Joselyn Ann King;

213, Mrs. S. Cole, Timothy Lynn King to Jonnie Dee McCallister;

214, Miss Bizup, Mary Michelle McCay to Lisa Renee Patten;

215, Mrs. J. Cole, Barbara Patterson to Stella Marie Shultz;

216, Mr. Haberl, Annette Louise Simpson to Lisa M. Torri;

219, Mrs. Keller, Debbie L. Trader to Tamatha Mae Yoder.

Homeroom 210, Mr. Winter's, Melissa Jewel Ackley to Thomas P. Churney;

211, Mr. Caruso, James Douglas Cline to Bonnie Lou Farabee;

212, Mr. McCurdy, John K. Fowler to Joselyn Ann King;

213, Mrs. S. Cole, Timothy Lynn King to Jonnie Dee McCallister;

214, Miss Bizup, Mary Michelle McCay to Lisa Renee Patten;

215, Mrs. J. Cole, Barbara Patterson to Stella Marie Shultz;

216, Mr. Haberl, Annette Louise Simpson to Lisa M. Torri;

219, Mrs. Keller, Debbie L. Trader to Tamatha Mae Yoder.

### Team Returns To County

A unique team comprised of a medical doctor, physics professor, two laboratory technicians and a jack-of-all trades is once again back at the Carmichaels Clinic with a prototype machine that checks the amount of dust in coal miners' lungs.

Operating on a grant from the Department of Energy and some aid from the Chronic Disease Program of Pennsylvania, the team has developed a machine that can measure the amount of dust in a miner's lung using magnetic force.

The machine, constructed with the expertise of Dr. Stephen Huber of Beaver College and the mechanical

ability of Steve Killough who is an electrician, mechanic and carpenter, is not an X-ray machine but uses a large magnet which aligns dust particles.

Medical expertise is provided by Dr. Allan Freedman of Hahnemann Medical College in Philadelphia who is an authority on pulmonary diseases.

Although the machine measures the amount of dust, it does not detect or measure black lung disease, which is the result of scar tissue developing around dust in the lungs, team members said.

"This machine is for the purpose

of preventative medicine, not to determine anything concerned with black lung," Freedman said Friday.

The team has been developing the prototype since 1977 when they received financial backing through the Chronic Disease Program. Health officials became disturbed about the increasing cases of black lung.

The new machine, although it doesn't cure black lung, or even treat it, can give miners an early warning that dust is collecting in their lungs. With periodical checks, the miner can request a transfer or even change careers when the dust collects to the point where black lung is developing.

## 29th PENNSYLVANIA BITUMINOUS COAL SHOW

Carmichaels, Pennsylvania



SATURDAY — AUGUST 21

8:30 a.m. Official Coal Show opening CAHS stadium  
9:00 a.m. State King Coal Mine Rescue contest, stadium  
8:30 p.m. Street dance on town square, Chamber sponsored

SUNDAY — AUGUST 22

1:30 p.m. Tri-County Band Concert, Moose Pavilion  
2:00 p.m. Firemen water battles, W. Greene Street  
7:30 p.m. Coal Queen Pageant, CAHS auditorium \$4 admission

MONDAY — AUGUST 23

6:00 p.m. Coal hand loading contest, show grounds Pensioners Day  
7:00 p.m. Water battles, semi finals

TUESDAY — AUGUST 24

6:00 p.m. Coal hand loading contest, trophies awarded Pensioners Day  
7:00 p.m. Water Battle finals, trophies awarded

WEDNESDAY — AUGUST 25

7:00 p.m. Tobacco Spitting contest, show grounds  
7:00 p.m. Miners Swap Night, exhibit hall

THURSDAY — AUGUST 26

6:00 p.m. Children's Pet Parade, town square  
6-9 p.m. Greene Co. Memorial Hospital Health Promotion on the show grounds  
7:30 p.m. Pittsburgh Coal Mining Institute of America, Program at CAHS auditorium, free admission to all

FRIDAY — AUGUST 27

5:30-6 p.m. Judging Bicycle parade, Central School  
6:30 p.m. Bike parade, all ages  
6-9 p.m. Hospital Health Prgmotion, show grounds

SATURDAY — AUGUST 28

Noon-3 p.m. Matinee carnival rides  
4:00 p.m. Antique Car Parade  
4:30 p.m. Coal Show parade

- CARNIVAL - NIGHTLY — Monday thro' Saturday
- BIKE Awarded Nightly
- Baked Goods Stand

- OUTSIDE EXHIBITS COAL MINE MACHINERY INSIDE EXHIBIT HALL
- Saturday — AUGUST 21 — through — Saturday — AUGUST 28





Sharlene Baer



Lois Bower



Betsy Dandrea



Melissa Ferree



Dolly Goodwin



Mary Annette Janco



Rhonda Kordish



Christanna Locke



Lynnanne Merrifield

## Coal Queen Selection Takes Place Sunday

CARMICHAELS — One of 15 candidates will be selected Sunday night as the 1982 Pennsylvania Bituminous Coal Queen during this year's Coal Queen Pageant which begins at 7:30 p.m. in the Carmichaels Area High School auditorium.

The queen selection is one of the highlights of the second day of the weeklong Pennsylvania Bituminous Coal Show held at Carmichaels each year. The Coal Show is staged by the King Coal Association.

Queen contestants will be judged on the basis of talent, poise, beauty and personality by a panel of out-of-the-area judges. During the pageant, 1981 Coal Queen Lisa Elek, of Carmichaels, will make her farewell appearance.

The 15 candidates were selected to represent their respective high schools through competition at the schools.

All tickets for the pageant are priced at \$4 and none are reserved with the exception of those for dignitaries. Michael J. Lucas will serve as master of ceremonies.

The queen will be crowned by W.G. Kegel, president and chief executive officer of the Rochester and Pittsburgh Coal Co. Crown bearer will be Corby J. Caffrey, eight-year-old daughter of Mr. and Mrs. Bernard Caffrey, of Rices Landing.

The queen will receive the traditional roses and queen bracelet, an invitation to visit Harrisburg where she will be introduced to the governor and presented before the State House and Senate.

All candidates will receive luggage from the King Coal Association, the bracelet from the Carmichaels Chamber of Commerce, and color portrait courtesy of the Carmichaels First National Bank where the portraits are currently on display.

Candidates have been entertained

with a swim party, a disco dance, and a dinner and evening at Heinz Hall to see the Civic Light Opera's presentation of "Brigadoon."

After the pageant the new queen will participate in the program for the Pittsburgh Coal Mining Institute of America to be held Thursday, Aug. 26, and she and her court will ride the chamber of Commerce float in the annual Coal Show parade on Saturday, Aug. 28. Prior to the parade, the queen, her court, and the other candidates will be guests at a luncheon at the Carmichaels Grange hall.

All the candidates and their mothers will be guests of the Carmichaels Area Women's Civic Club at their September Tea to be held Thursday, Sept. 2 in the Carmichaels Senior Citizens Center.

Members of this year's coal queen committee are Connie Morris and Paula Groves, co-chairpersons, Carol Russell, Debbie Diamond, Helene Wilson and Amy Beatty.

Candidates for Coal Queen this year, their high school and their talent are, Sharlene Baer, German High School, vocalist; Lois Bower, Beth-Center High, acrobat; Betsy Dandrea, Frazier High, baton twirler; Melissa Ferree, Geibel High, jazz dancer; Dolly Goodwin, Waynesburg Central High, jazz dancer; Mary Annette Janco, Jefferson-Morgan High, ballet dancer; Rhonda Kordish, Brownsville High, jazz dancer.

Christanna Locke, Albert Gallatin High, pianist; Lynnanne Merrifield, Clay-Battelle High, baton twirler; Debbie Tekavec, Fairchance-Georges High, dancer; Gerylwn Ward, Uniontown High, dancer;

Gerri White, Laurel Highland High, lyrical dancer; Julie Winslow, Carmichaels Area High, baton twirler; Jackie Yonek, California Area High, pianist; and Susan Zalar, Mapletown High, dancer.



Debbie Tekavec



Gerylwn Ward



Gerri White



Julie Winslow



Jackie Yonek



Susan Zalar

## Regina Matteucci, Keith Davis Wed

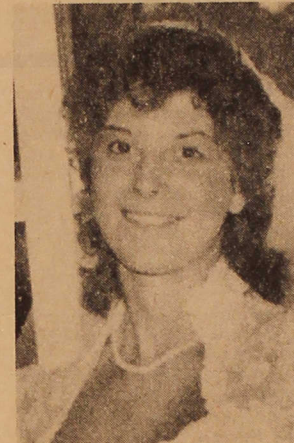
The marriage of Regina Ann Matteucci and Keith Colin Davis was solemnized at a nuptial mass at St. Marcellus Roman Catholic Church in Jefferson, on Saturday, July 31, 1982.

The bride is the daughter of Mr. and Mrs. Renardo Matteucci of Dry Tavern. The parents of the groom are Mr. and Mrs. Joseph Davis of Clarks-ville.

The Rev. John Chess of St. Marcellus and Monsignor Paul J. Simko of St. Michaels in Fredericktown concelbrated at the 3:30 p.m. ceremony.

Music was provided by Paul Koch, organist at Carnegie Institute and St. Paul's Cathedral of Pittsburgh. He accompanied and directed the Cathedral Quartet — Alan McCollough, John Niederberger, Robert Rittmeyer and Edward Gorman. They sang several selections.

The bride was escorted to the altar by her father. She wore a gown of white silk organza, styled with a Queen Anne neckline, fitted bodice and long, tapered sleeves trimmed with appliques of alencon lace. Her scalloped semi-cathedral length veil and blusher of imported English alusion was attached to a Juliet cap of alencon lace trimmed with pearls. All bridal traditions were carried out — she carried a handkerchief belonging to her grandmother, she wore her mother's pearls and carried a sixpence in her shoe given to her by her aunt. Her diamond earrings were a gift from the groom. She carried a



MRS. KEITH C. DAVIS

cascading bouquet of cymbidium orchids, white mums, purple asters, white roses and ivy.

Attending her sister as maid of honor was Robin Matteucci. Bridesmaids were Renee Turner, Richelle Marini, sisters of the bride; Amanda Davis, cousin of the bride; Kathy Rohanna, Edie Pagac, Collette Knight and Tracey Praiser.

Serving as best man for his brother was Dale Davis. Ushers were Mark Davis and Kent Davis, brothers of the groom; Brent Turner, Frank Largent and Tom Beglin, cousins of the groom; Marc Marini and Brian Rohanna.

Ring bearer was Marc Marini II, nephew of the bride, and flower girl was Megan Turner, the bride's niece.

A reception for over 600 guests was held at the Clarksville fire hall. Natali Viano attended the guest book.

The bride and groom are graduates of Jefferson-Morgan High School. The bride received her bachelor's degree in elementary education from Indiana University of Pennsylvania. The groom received a bachelor's degree in education in the Industrial Arts field from California State College. He is employed by the South Allegheny School District in McKeesport.

Following a trip to Florida, the couple is residing at 104 South Vine Street, Carmichaels.

## community events

**FAMILY REUNION**  
The first reunion in many years for descendants of W.M. and Luella Hartley and William and Sadie Courtwright was held July 25 at the Jacktown Fairgrounds with over 150 present.

Prizes were awarded to Margaret Oliveer, oldest woman; Martin Postlewaite, oldest man; Joel McMillen, youngest boy; Samantha Kay Jones, youngest girl; Mrs. Bessie Strait, woman traveling the greatest distance; Floyd Welling, man traveling the greatest distance; Frances Grim, living the closest; Roger V. and Blanche Courtwright, most children, and Velma Hartley, most grandchildren.

Those attending were from Pennsylvania, West Virginia, Ohio and Indiana.

**PHILLIPS REUNION**  
The annual reunion of descendants of Frank Phillips will be held Sunday, Sept. 5 at the Greene County fairgrounds near Waynesburg. Dinner will be served at 1 p.m.

Officers in charge of reunion arrangements are, Dorothy McNeely, president; Linda Ankrom, vice president; Winnie Ankrom, secretary; and Delbert Ankrom, treasurer. All relatives and friends are invited.

**MORRIS REUNION**  
The 15th annual Morris reunion will be held at the Jacktown Fairground, Wind Ridge Sunday, Aug. 22. All friends and relatives are invited for a basket lunch at noon.

**EVANGELISTIC SERVICES**  
Richard Hartman, pastor of the Valley Chapel United Methodist Church near Holbrook, announces evangelistic services will be held in the church Sept. 15 through Sept. 19 at 7:30 p.m. nightly. The services will be conducted by Evangelist John C. Golnac.

**CARD SHOWER**  
Dora Lemmon Rice will celebrate her 90th birthday at her home in New Freeport on Saturday, Aug. 28. She is a former teacher in the Gilmore Township schools.

Her address is R.D. 1, Box 18, New Freeport, Pa. 15352.

**TASTY SNACKERS MEET**  
The Sugar Grove Tasty Snackers 4-H Club met recently in the home of leader Margaret Jacobs.

Taking part in the ceremonies were Ruth Franco, Chris Clutter and Amy Franco.

**25TH ANNIVERSARY**  
Mr. and Mrs. Ray King of Waynesburg R.D. 5 were pleasantly surprised on their 25th wedding anniversary with a cookout dinner and open house held by their children Ronnie of Waynesburg and Mrs. Lisa Eddy of Spraggs.

They were presented with a silver tray and a three-tier cake baked by Lisa. Some 70 persons were in attendance.

**GARDEN CLUB**  
The Town and Country Garden Club of Rices Landing held their August meeting in the home of Helen Barbor. Plans were completed for planting rhododendrons at Sacred Heart Church, Rices Landing.

Winelle Gray presented a program on "Birds Among Us." Roll call was answered with naming a favorite annual and where it grows best.



**ENGAGED** — Mrs. Sam Gatto of Havre de Grace, Md., announced the engagement of her daughter, Candy G. Gatto, to Charles A. Strosnider, son of Mrs. Alfred Strosnider of Waynesburg R.D.2.

Candy attended Harford Christian High School and Harford Community College and Bob Jones University. She is currently employed by Trans-Eastern Inspection, Inc. in Washington.

Her fiancée is a graduate of Waynesburg Central High School and attended Penn State University's College of Engineering. He is currently employed by Trans-Eastern Inspection, Inc. of Washington.

An Oct. 9 wedding is planned.

## Daneen Keyser Bride Of Jeffrey Coneybeer

Daneen Keyser and Jeffrey Alan Coneybeer were married in Bridgeport, W.Va., Saturday, August 7, 1982.

Mr. and Mrs. William K. Keyser of 6 Biddle Acres, Carmichaels, are the parents of the bride. Mr. and Mrs. Bernhard W. Coneybeer of Pine Street, Jefferson, are the parents of the groom.

The 3 p.m., double-ring ceremony, was performed on the lawn at the home of the bride's grandmother, Mrs. Ruth Keyser of Bridgeport. The Rev. Thomas Horne officiated. Mrs. Frances Coneybeer, mother of the groom, was organist.

Given in marriage by her father, the bride wore a full-length gown of white organza with a Queen Anne neckline, fitted bodice of lace and pearls with long sleeves cuffed at the wrist with lace and pearls. The full skirt fell into a semi-cathedral length train. She wore a picture hat of lace and pearls with an organza bow in the back and carried a bouquet of white roses and baby's breath.

Patty Hanley of Nemaocolin was the bride's attendant. She wore a white gown trimmed in blue. Bernhard W. Coneybeer Jr., brother of the groom, served as best man. Immediately following the wedding, a reception was held on the lawn.



MRS. JEFFREY A. CONEYBEER

The bride is a graduate of Carmichaels Area High School and is employed as a dance instructor at Barbara Moschetta's School of Dance. The groom, a graduate of Jefferson-Morgan High School and California State College, is employed by Mill District School Area of Clinton, Conn.

After a wedding trip along the New England coast, the couple will reside in Westbrook, Conn.

## Land Will Become Park

ROGERSVILLE — The Center Township Supervisors, at their Thursday, Sept. 2 meeting, are expected to formally adopt an ordinance setting aside 9.8 acres of land just east of Rogersville as a public park.

Center Township purchased the property five years ago from the Russell Headlee family and the land has been used for recreational purposes since that time. The proposed ordinance will officially declare the land as a public park and will also establish rules and regulations for its use.

## Repairs Planned

WAYNESBURG — The Greene County commissioners said Thursday that a county bridge on a Gilmore Township road will be repaired and reopened as soon as county maintenance department personnel are available to do the work.

The bridge, which spans Robert's Run near Pine Bank, was closed last week after part of the deck collapsed, making it hazardous for vehicles to cross. The bridge provides access to several houses and is used by farmers to get to their fields. Its closing requires a detour of about eight miles.

## Society To Meet

The Wind Ridge Missionary Society meeting for August has been postponed until 7:30 p.m. Tuesday, Aug. 24, in the social rooms of the Presbyterian Church, Wind Ridge, with Martha McMillan as hostess and Mrs. Fred Polen giving the book report.

## 'Baby Beautiful' Contest Planned

CARMICHAELS — The Carmichaels Area Jaycettes are sponsoring their third annual "Baby Beautiful Contest." The contest benefits the Children's Research Foundation for Osteogenesis Imperfecta, St. Jude's Children's Research Hospital and the March of Dimes.

Contestants must not be over 3 years old, and must be a resident of the Carmichaels Area School District. A 5 by 7 or smaller picture of each entrant must be mailed by Sept. 9; the baby's name, address and phone number should be on the back.

Pictures should be sent to "Baby Beautiful Contest," c/o M. Bokot, 302 E. Greene Street, Carmichaels, Pa. 15230. A stamped, self-addressed envelope must be enclosed for return

of the picture.

All entries will receive a surprise gift. In addition, the first-prize winner will receive a \$50 savings bond, donated by Gallatin National Bank of Carmichaels; the second-prize winner will receive a photographic package at Sears Photo Center in the Uniontown Mall; and the third-prize winner will receive a \$10 gift certificate donated by Gabler's Drug Store, Carmichaels.

Quarters will be used to determine the winner, with each quarter equal to one vote. The pictures will be displayed at the following businesses in Carmichaels: Sept. 13 to 17, Gallatin National Bank; Sept. 20 to 24, First Federal Savings and Loan of Carnegie; and Sept. 27 to Oct. 1, First National Bank of Carmichaels.



## Grand Champion Steer

Shown with the grand champion 4-H steer they purchased Thursday night at the Greene County Fair, from left, are Douglas Black and his wife, Joann, of Greensboro, and Gene D. Yost and his wife, Sara, of Mt. Morris. They are shown with Matt Belding, of Waynesburg R.D. 2, who showed the steer. It brought \$3 per pound for a total price of \$3,570.

Observer-Reporter

## WAYNESBURG REPUBLICAN

(ISSN0279-5043)

122 S. MAIN STREET

WASHINGTON, PA. 15301

Continuously Printed Since 1833

Published Every Friday By

Observer Publishing Company

122 S. Main St., Washington, Pa. 15301

Managing Editor, Robert M. Eichenlaub

Business And Advertising Manager, William E. Meighen

Second Class Postage Paid At Washington, Pa. 15301

Postmaster: Address all communications, change of address notices, undeliverable mail and orders for subscriptions to Observer Publishing Co., 122-126 South Main Street, Washington, Pa. 15301.

TELEPHONE: WASHINGTON 222-2200

WAYNESBURG 627-3131

SUBSCRIPTION RATES

One Year .....	\$10.00	3 Months .....	\$3.50
6 Months .....	\$5.50	Single Copy .....	15c

## A Time For Action

There has been no official connection made between the death of a prominent Waynesburg businessman who was struck by a car on Route 21 last week and parking along the busy highway.

However, the tragic accident has again brought into focus a dangerous situation that has existed far too long in the Morrisville section of Franklin Township.

Route 21 from Waynesburg to Carmichaels has always been one of the most traveled highways in the county. In the past few years, the addition of new businesses, especially in the Morrisville section, has caused a problem that must be immediately addressed by the state Department of Transportation and Franklin Township.

Because of the increased number of fast-food restaurants on both sides of the highway, the construction of two shopping centers, increased activity at recreational areas and the many events held at the county fairgrounds, there is a marked increase in pedestrian traffic and traffic pulling onto Route 21.

By allowing vehicles to park along the highway, the view of motorists and pedestrians alike is often obstructed. The accident rate on Route 21 in this area is one of the highest in the country according to the latest statistics.

Several years ago Franklin Township passed an ordinance prohibiting parking along Route 21 but signs have never been erected. Funds for the purchase and installation of the signs was applied for through a state safety program but apparently the program was a victim of the budget cuts in Harrisburg.

Should the township bear the costs and install the signs it would still require the aid of the state for enforcement. Without a police force, the township can not enforce the ordinance. More than "no parking" signs would be necessary because placing a citation on an illegally parked vehicle would not reduce the danger caused by the parked vehicle.

The township must erect "No Parking Tow-Away Zone" signs and then follow through by having the illegal vehicles towed from the scene.

Speaking of the dangerous parking practices during the recent Greene County fair which may have contributed to the death of a citizen, Coroner Frank Behm said, "We learn by our tragic errors."

One lesson is more than enough.

## between the bookends

by marcia mckenna biddle

I saw a newspaper article the other day called, "Help Your Dog Fight Stress." I knew it was meant for me.

I have known for a long time that our sheep dogs act a little, un, weird, but I had never thought about the idea that they might be having actual psychological problems. Now I could read an article, and improve their mental health.

The article lists several things which cause stress in dogs: "car travel, a long stay alone, a confrontation with another animal, noisy children, hunting, or watching its owner pack a suitcase."

In the case of my dogs, car travel is out as a cause of stress, or of anything else. I would rather walk to Pittsburgh than make the trip with two sheepdogs in the car. Of course, they would love to go, and are extremely disappointed when they are forced out of the front seat. They plainly suffer stress when the car leaves without them, but I can't think of anything sensible to do about that.

They are also not allowed to go hunting, and that upsets them, too. But I think the chaos they would make of deer season would be worse for them than any feelings of rejection they might feel on being kleft at home again.

And they love noisy children, even the ones who scream in terror at the sight of them. My small niece took one look at them, cried, "What ARE they?" and claimed ever after that we kept bears. My brother suggested that we have a cook-out in the yard, but I said, "Have you ever tried to eat

in a yard with two sheepdogs?" No cook-outs.

One thing the article doesn't mention is house-painting. This project has caused no end of consternation among the dogs. They want to climb the ladders. And they want to play. They like to run off with paintbrushes. Luckily, they have brains enough not to eat the paint, but it's a constant battle to keep them from spilling it. I think this causes stress, at least among the painters.

According to the article, "A dog suffering from stress will appear depressed, inactive, sluggish and unresponsive." Stress also causes dandruff, it seems. But I'm not dedicated enough to hunt for dandruff in a sheepdog's fur. Who knows what else I might find?

And although the dogs often seem depressed, they are rarely inactive or unresponsive. When last seen, they, in a "confrontation with another animal," were chasing Charlie the cat around the house. I think they enjoyed it. Charlie is the one suffering from stress, I imagine.

Further advice from the paper says, "Keep your animal on a regular schedule for feedings and outdoor walks." And, "Give him his own place in the family home, an area he can always retreat to for sleep and rest." Impossible. The house wouldn't survive it. Nor would I.

I'm afraid I see a pattern emerging from all this. The dogs aren't allowed to ride in the car, go along on hunting trips, or sleep in the house. They feel rejected. They are under stress and feel depressed. I guess I'll just have to find them a psychiatrist.

## Church Dispute Over

CARMICHAELS — The filing of a property deed in the Greene County Courthouse this week has apparently ended all ties between a local Presbyterian church and the Washington Presbytery of United Presbyterian Churches in the U.S.A.

The Greene Valley Reformed Presbyterian Church at Carmichaels recorded a deed in the office of the register and recorder and a \$100,000 mortgage held by the First National

## Brave To Get \$50,000 Aid

BRAVE — The small southern Greene County community of Brave will receive a \$50,000 grant for the installation of sewer lines, according to state Commerce Secretary Geoffrey Stengel.

The grant to the Brave Water and Sewer Authority will go toward a \$137,000 project to update and improve sewer service to about 40 residents now making use of a community septic system.

According to Harold Stiles, secretary of the authority, grants from the Department of Environmental Resources and the Environmental Protection Agency and the grant received Tuesday are expected to pay for 85 percent of the improvement costs.

Bank of Carmichaels.

The transactions officially make the local church the owners of church property which includes a recently constructed educational annex.

Members of the local church voted to break from the Presbytery some time ago after disputing certain policies of the national group. The Presbytery brought suit in Greene County Court against the Carmichaels church last August and contended the Greene Valley articles of incorporation stipulated the church would be governed by the constitution of the United Presbyterian Church. That constitution, it claimed, provides when a church is dissolved, its property remains with the United Presbyterian Church.

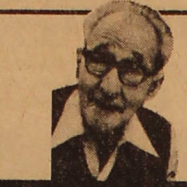
However, a tentative agreement was reached between elders of the local church and a committee representing the board of directors of the Washington Presbytery.

The settlement calls for the local church to make a cash payment of \$24,000 to the Presbytery and for the local church to pay off mortgages of \$54,725 and \$23,854 which the Presbytery held on the church educational building. In addition, the local church will pay the \$1,600 Presbytery assessment for 1980 and an \$8,000 pledge to the Major Mission Fund and a \$10,000 mortgage on the former church building in Nemaocolin.

## Faces From The Past-Do You Recognize Them?



The first group of practical nursing trainees at Greene County Memorial Hospital more than 20 years ago eventually became an important part of the nursing care service at the local facility. Unfortunately, the names of the pioneer group could not be obtained.



## Fact &amp; Folklore

John O'Hara

Hundreds of Greene County residents share the sorrow of the family of Harry A. Cree, of Waynesburg, who was killed when struck by a car Thursday, Aug. 12, while crossing Route 21 late that night on his way home from the Greene County Fair.

Although his early life was spent in Jefferson Township, where he was born, and later for several years in Jefferson while he was associated with the former Jefferson bank, he later years were spent in Waynesburg and the Waynesburg area.

In each community in which he lived he shared generously his dedication in various community activities which enriched the lives of people who knew him only by name and many others who had worked with him in various organizations from groups associated with Little League Baseball, which possibly was nearest to his heart and of which he still served as district administrator at the time of his death, to the fund drives which in one way or another brought comfort and cheer to many persons who were not so fortunate as he in having had the physical strength and the humanitarian inspiration to help others.

It can be said he spent his last hours of life helping the many Greene County 4-H youngsters who had consigned their animals to the annual auction that climaxed their year of faithful work, seven days a week, in feeding, caring and finally grooming their animals for the popular sale which has now become one of the biggest attractions at the county fair.

By sheer chance I had the pleasure of spending the at least a half-hour with Mr. Cree at this year's 4-H Baby Beef and Market Lamb Sale. Like all of the other activities to which he had contributed his time and effort, he had also purchased at least three of the steers auctioned that evening.

It was easy to be aware that the

sale was an event in which he could easily bridge the gap between his own boyhood — long before the day when such sales were ever held — and the activities of today's youth.

From his own lifetime experiences he could appreciate to a greater degree the pleasure of adults who spent their youth on a farm before modern equipment had taken much of the drudgery out of farm work.

It was easy to see the evening at the fair was one which Mr. Cree enjoyed thoroughly. He applauded vigorously and shouted his encouragement to each and every one of the young participants. He also took time out in our conversation between sales to praise the work of the adults, from auctioneers, to bid takers, to the handlers that made the sale another success.

He also remembered the office crew that were out of sight and out of hearing of the sale activity for their dedication in keeping the tabulations right up to the minute a sale was complete.

Little League Baseball was another one of the youth oriented community activities to which Mr. Cree had been a long time and constant contributor, both financially, and even more importantly, of his time. He served as an officer in Little League Baseball and was its district administrator at the time of his death. As a long time supporter and administrator he gave untold hours of his time to Little League Baseball in its season-long operations and in arrangements for a smooth running organization. He had also been a baseball player himself in the adult twilight leagues.

But his efforts in a broad range of community efforts were not confined to sports.

He had played planning and active solicitation roles in virtually every fund raising drive held since he

moved to the Waynesburg area many years ago.

An extremely affable individual, Mr. Cree's always friendly and cheerful greeting was so sincere it could wipe away the gloom and despondency of a weary day.

Having worked with Mr. Cree on one or two of the early Waynesburg College gymnasium financial campaigns, this writer found Mr. Cree's enthusiasm a stimulating factor in the long efforts of the late College President Paul R. Stewart to turn a dream into a reality during those depression days when any gift, large or small, was greeted with wild enthusiasm.

Like the late Dr. Stewart and the late mathematician, Walter Scott of Waynesburg College, who were also reared on Greene County farms, Mr. Cree planted a large vegetable garden at his home in Franklin Township near Waynesburg.

Mr. Cree enjoyed every minute of his work in his garden and shared many of its fine products with friends and neighbors. He also entered many of the vegetables from his garden as well as canned goods in the home and garden department of the Greene County Fair and was a consistent blue ribbon winner.

His dedication to his work extended to the 33 years he was employed and later was manager of the South Penn Telephone Co. at Waynesburg and later with the Mid-Penn Telephone Co. which took over South Penn.

He was, in short, an outstanding citizen not only of Waynesburg and Franklin Township, but of all Greene County as well.

In his passing, Mr. Cree left to the community at large the priceless legacy of his good example for those who would aspire to follow in his footsteps in the years that are yet to be.

## Annexation Would Boost Waynesburg's Tax Base

WAYNESBURG — Borough manager James Ealy, at a press conference Tuesday, explained in further detail the reasoning behind the borough's intention to accept the annexation petition presented by a housing complex in Franklin Township.

Mountainview Gardens Limited Partnership, owner of 120-unit apartment complex just north of the borough line, petitioned the borough last month to be annexed. Borough council agreed and is in the process of drawing up an ordinance to annex the property.

Last week, attorney Wallace Maxwell who lives on Bridge Street near the housing complex, questioned in a letter to the editor if the borough had considered all aspects of the proposed annexation particularly the possible added costs to the borough.

Ealy addressed each item and also explained the annexation possibility has been discussed informally for several months. "We have checked with many agencies over the past several months to determine what annexation would mean to the borough," Ealy said.

Discussing police protection, which is believed to be the prime reason for Mountainview presenting the petition, Ealy said this will be the only new service provided by the borough. "We hopefully can provide this service with our current complement of police officers but we will review the matter in the future and if

necessary add an additional officer," Ealy told the media.

Ealy felt that any crime situation at Mountainview would probably affect the borough anyway and the borough would be able to handle the situation better if the complex is a part of the borough.

The current assessed valuation of the housing complex is \$630,000 and the market value of the property is \$2.1 million. Next year the valuation will increase to \$690,000 and \$2.3 million respectively. "Based on those

## Bridge Work Will Begin This Week

CARMICHAELS — The state Department of Transportation has announced a \$368,679 bridge improvement project will begin this week in Cumberland Township.

The bridge that carries Route 21 over Muddy Creek will be rehabilitated under the contract awarded to MATX, Inc. of Carlisle.

This bridge is located just west of Bailey's Crossroads and the South Muddy Creek Road. Improvements to the bridge will include paving the approaches and shoulders, drainage repairs and the installation of guardrail.

Work is anticipated to be completed in October.

figures, the borough would realize an additional \$15,870 in real estate taxes," Ealy said. In addition, the borough would receive per capita taxes and the 1 percent, earned income from the residents of the complex. "It would be difficult at this time to project the total revenue from those two sources," Ealy continued.

Ealy said the additional revenue would help the borough's tax base and could keep the millage rate from increasing further in the future.

In the letter to the editor, the question of road maintenance was raised. Ealy said the road leading from Porter Street to the complex and the parking lots would remain the responsibility of the complex owners.

The timing of the petition was also questioned in the letter, but Ealy said the housing development owners chose the time to present the request.

"Should someone question the complex owners about the circumventing of borough codes during construction," Ealy said, "the complex was constructed under regulations by Housing and Urban Development and the Farmers Home Administration which have standards comparable to, or even tougher, than borough codes.

In regard to sewage treatment, Ealy said the current issue between Franklin Township, the Franklin Township Sewer Authority, Mountainview Gardens and the borough is a separate thing which has no bearing on possible annexation.

## AROUND TOWN

By THE STAFF

Now that the county fair season is over for another year, focus will be centered on the annual Pennsylvania State Coal festival, scheduled to begin Saturday, Aug. 21, in Carmichaels.

Mr. and Mrs. Charles Stephan, former Waynesburg residents who are now permanent residents of Mesa, Az., are spending a few days visiting friends and relatives in Waynesburg.

Frank Ullom, former Waynesburg resident who has lived in Miami, Fla., for several years, is spending a few days in Waynesburg, having been called here by the death of his sister-in-law, Mrs. John Ullom of East End.

Idle question: What happened to the renewed interest in muzzle loader shotguns we heard so much about a few years ago? They don't seem to be mentioned much lately.

A salute is due to the grounds crew at the Greene County Fairgrounds. All of the litter which is inseparable from an event of that sort was cleaned up neat as a pin within a few hours after the last bingo game had been finished and the last exhibits and food concessions had been shut down for the year.

Speaking of fairs, several Waynesburg Central High School wrestlers will be competing in the annual tournament at the upcoming Ohio State Fair. It will draw competitors from all over Ohio and adjoining states, also an expected 50 or so from Greene County.

"School Days, school days," is a song that reflects the sentimental attitude towards education by earlier generations of Americans as compared to those taking classes in 1982.

At least that is the opinion of Dr. Don C. Longanecker, the man who held the position of county superintendent of schools in Greene County for many years before retiring in 1958.

Dr. Longanecker had a long and successful career in public education in Greene and other western Pennsylvania counties that began shortly after he graduated from Allegheny College at Meadville.

His professional career paralleled the changes in public education that occurred during his long career from a classroom teacher and to when he was concerned with planning and administration.

He is now enjoying an active retirement and keeps busy with his many interests, especially vegetable gardening which relates to his youth on the farm of his parents, Sylvester and Ida (Debolt) Longanecker in Greene Township where he was born Aug. 3, 1892.

His parents were both members of early families in southeastern Greene County. He graduated from Allegheny College and started his teaching career in the former Cumberland Township high school in Carmichaels. Afterwards he taught history and social science at Mt. Pleasant and was supervising principal of schools at Bentleyville. He became assistant superintendent of schools in Greene County in 1926 and was advanced to county superintendent in 1938, remaining in that position until he retired. He was succeeded by the late William Hartley of Rice's Landing.

He has been a member of various fraternal and professional organizations. He has served as a trustee of California State College for 32 years, where Longanecker Hall was named in his honor.

For several years after his retirement he owned and managed a large fruit farm on Route 19, five miles north of Waynesburg.

As an educator with a long vision for the need of advanced public school facilities, Longanecker worked hard to replace the former one-room schools with buildings that would provide pupils with a better preparation for college and, for those in the vocational departments, the basics of training in business and industry as the nation moved from rural to an industrial culture.

Mr. Longanecker was the husband of the late Carrie Gwynne. Their son, Donald Jr., was killed in World War II while serving under General Patton in Europe. Their daughter is married to Samuel Scott.

On his 90th birthday a couple of weeks ago, he was honored at a family picnic at the home of his daughter and son-in-law, Mr. and Mrs. Samuel Scott at their home on Route 19 north in Franklin Township. Other family members attending were Mrs. Carol Weathers of Meadville, Diane Schmunk of Bridgeville, Nancy Scott of Springfield, Ohio; and two great-grandchildren, Case Weathers of Meadville and Daniel Schmunk of Bridgeville.

Longanecker resides at West Lincoln Street in Waynesburg. To this day he has never let his advancing years interfere with his love of the soil as exemplified in his fine vegetable garden each summer and his love for watching baseball, whether by "tube" or in person.

# County Obituaries

## Harry A. Cree

Harry A. Cree, 83, of 354 Willow Road, Franklin Township, died at 11:40 p.m. Thursday, August 12, 1982, as the result of injuries received when he was struck by a car near the Greene County Fairgrounds.

He was born August 3, 1899, at Davistown to Samuel and Ella Phillips Cree. His entire life was spent in Greene County and Waynesburg where he was a member of the First Presbyterian Church having served as an elder and member of the Board of Sessions.

He was a member and past president of the Waynesburg Rotary Club and was currently serving as district administrator of Little League baseball in Greene and Fayette counties.

During his 33-year career with the telephone company, he was commercial supervisor and secretary of the former South Penn Telephone Company. In 1967, when South Penn was merged with Mid-Penn Telephone Corp., Cree was named district manager.

Early in his life, Mr. Cree was a school teacher, mail carrier and cashier at the First National Bank in Jefferson before joining the phone company on Sept. 29, 1939.

He graduated from Jefferson High School in 1918 and taught briefly at West End School in Jefferson Township before resigning to join the U.S. Army. Following his discharge, he taught at Rays School and Khehive School. He was employed by Tippy-Ann Coal Co. near Nemaacolin in 1920 and then returned to teaching at Bailey's School in Cumberland Township.

He was a member of the Rotary Club since 1941 and served two terms as president. He helped to organize the first Cancer Crusade in Greene County in 1946 and served in various capacities including county chairman for four years.

Mr. Cree served on the Greene County Memorial Hospital board of directors and was active with the Waynesburg Chamber of Commerce, the Muddy Creek Valley Cemetery Co. and the Waynesburg College Boosters Club.

He was married December 24, 1926, to the former Anna Scott, who survives. Also surviving are two sons, Harold S. of Waynesburg and Paul A. of Shellecta; four grandchildren: Jeffrey L. of Waynesburg, Patricia A. of Indiana, Susan Lane Harvey of Southington, Conn. and Paul A. of Shellecta; two great-grandchildren, Jessica and Bryce; two sisters, Mrs. Mable Cree Scott of Waynesburg R.D. 2 and Mrs. Osie Cutshall of Guys Mills and a brother, Hugh Cree of Meadville.

Deceased are three sisters, Gail, Ethel and Vesta and four brothers, Earl, Roy, Edwin and Ralph.

## Ullom

Opal S. Ullom, 68, of 825 Sherman Ave., Waynesburg, died at 6 a.m. Tuesday, August 17, 1982, in the Greene County Memorial Hospital following an illness of one year.

She was born November 5, 1913, in Davistown, a daughter of Freeland (Brody) St. Clair and Birdie McClure St. Clair.

On May 29, 1942, she married John R. Ullom, who survives.

Mrs. Ullom spent most of her life in Waynesburg, where she worked for over 30 years at Inghram's Shoe Store. She was a past president of the Ladies Auxiliary B.P.O.E. 757 of Waynesburg Elks.

In addition to her husband, she is survived by one son, John R. II of New Hope; and two brothers, Carl St. Clair of Morgantown, W.Va., and Dale St. Clair of Akron, Ohio.

She was preceded in death by one brother, Edward St. Clair; and one half-brother, Irwin McClure.

## Blanche E. Brannon

Blanche E. Stockdale Brannon, 71, of Oil City, formerly of Rutan died Sunday, Aug. 8, 1982, in her home of an apparent heart attack.

She was born November 22, 1910, in Rutan to Ray and Nellie Cumberland Stockdale.

She is survived by her husband Wilford Brannon; two children, Bonnie Jean Sacco of Harrisburg and Jane Ross of Oil City; six sisters: Helen Singleton of Georgia, Marie Stewart and Hope Bosore of Toledo, Ohio; Grace Isminger of Sycamore R.D. 1 and Faith Gillogly and Joy McCollum of Holbrook and a brother, Harry Stockdale of Delmont.

A brother Jack Stockdale and two sisters, Ferne Stockdale and Pauline Wise are deceased.

Services and burial were held August 11 in Oil City.



**DIES** — Richard H. Neubauer, 59, of Waynesburg, a well-known area florist, died Tuesday in New Orleans, La., where he had been attending an F.T.D. National Convention. Neubauer had operated a floral shop at Waynesburg for many years and was active in Democratic politics in Greene County.

## Neubauer

Richard H. (Dick) Neubauer, 59, of Waynesburg R.D. 2, Rolling Meadows, Waynesburg, died Tuesday, August 17, 1982, in the Charity Hospital, New Orleans, La., while attending the F.T.D. National Convention.

He was born April 13, 1923, in Cameron, W.Va., a son of the late John and Helen Neubauer.

On August 24, 1958, he married Doris Ann Gallagher, who survives.

Following his graduation from Moundsville High School in 1941, Mr. Neubauer entered the U.S. Naval Reserve, serving for 47 months during W.W.II.

He was president of Neubauer's Flowers Inc. He was associated in the flower business bearing the family name and started by his parents in Cameron, W.Va., in 1921. He worked with the family firm's Cameron and Moundsville, W.Va., locations before coming to Waynesburg in 1950 to open his family-owned business.

He was active in Greene County politics, and served in various positions with the Greene County Democratic Committee. After serving as president of the Greene County Young Democrats, he also served as a member of the Penna. Democratic State Committee from 1970-78.

A former field investigator with the Penna. Department of Revenue, he also served as a district manager with the Penna. Department of Revenue's Bureau of State Lotteries, with offices in Pittsburgh and Waynesburg since the inception of the lottery in 1972.

He was a member of the Waynesburg Chamber of Commerce, having served as both president and director, and was a past member of the Board of Trustees of Greene County Memorial Hospital. He was also a member of the Greene County Country Club, Waynesburg Lodge 757 B.P.O.E. Elks, and the Waynesburg Lodge 461 L.O.O.M., having served as governor of the Cameron, W.Va., and Waynesburg lodges.

He was a past state chairman of the Civic Affairs Committee of the W.Va. State Moose Association, and was a member of the James Farrell Post 330 of the American Legion, Waynesburg Post 4793 V.F.W., Waynesburg Chapter 123 D.A.V., Mt. Morris Sportsmans Club, and Local Union 1986 AFSME.

Mr. Neubauer was a member of the Florists' Transworld Delivery Association, Teleflora Inc., and was listed in the Who's Who of the Society of American Florists.

He was a member of the First Presbyterian Church, Waynesburg.

In addition to his wife, Doris Ann Neubauer, he is survived by four sons, Paul of Moundsville, W.Va., Sam of Waynesburg, Steve of Uniontown, and Richard II at home; two daughters, Michelle Simmons of Moundsville, W.Va., and LeeAnne at home; seven grandchildren; two brothers, Frank A. of Cameron, W.Va., and Joseph of Moundsville, W.Va.; and two sisters, Helen Kretzner of Rockbridge, Ohio, and Terry Platt of Collsville, Ohio.

He was preceded in death by one brother, Robert.

## Cummins

Paul Robert (Bob) Cummins, 73, of 252 Bridge Street, Waynesburg, died at 1 p.m. Friday, August 13, 1982, in the West Virginia University Medical Center following an illness of three weeks.

He was born June 2, 1909, in Brave, a son of the late Charles (Tony) and Bertha Owens Cummins.

He spent most of his early life in Brave, several years in Louisiana, and the past 18 years in Waynesburg.

He was a member of the Kents Chapel United Methodist Church, and was affiliated with the First Christian Church while in Waynesburg.

Mr. Cummins was an avid golfer, and was a veteran of World War II, having served with the U.S. Navy. He was a member of the V.F.W. Post 4793, Waynesburg. He was employed for many years as an erecting millwright for various contractors.

He is survived by his wife, Helen Keener Cummins, whom he married August 12, 1964; one step-daughter, Mrs. Jane (Shirleyann) Henderson of Mentor, Ohio; two step-sons, William Keener of Mentor, Ohio, and George F. Keener of Waynesburg; five step-grandchildren; two sisters, Mrs. Marion (Mabel) White and Mrs. Lloyd (Saralou) Moore, both of Brave; three brothers, William Glenn of Wanna, W.Va., Victor of Delmont, and Donald of Ithaca, N.Y.; and several nieces and nephews.

He was preceded in death by five brothers, Arthur, Hubert, Herbert, Patrick, and Rex.

## Ross

Leroy Ross, 75, of 1530 Sixth Street, Waynesburg, (formerly of Carmichaels and Rices Landing), died at 8:45 a.m. Wednesday, August 18, 1982, following a long illness.

He was born February 7, 1907, in Carmichaels, a son of Frank M. and Frances Areford Ross.

Mr. Ross attended the Carmichaels Area Schools, graduating in 1927.

On December 25, 1937, he married Genevieve Price, who survives.

He was a retired salesman, having been employed at Bailey's Garage in Carmichaels. He also served as a bus contractor for the Carmichaels Area school district, and was a former director of the Rices Landing National Bank.

A veteran of W.W.II, Mr. Ross served with the U.S. Army. He spent most of his life in the Carmichaels and Rices Landing area, living in Waynesburg for the last three years.

He was a member of the Hewitt Presbyterian Church in Rices Landing, and served as an elder and trustee. He was a life member of the Masonic Lodge, and a member of Valley Lodge 459 in Masontown, the Uniontown Lodge of Perfection, Pittsburgh Consistory, the Tall Cedars of Lebanon Lodge in Uniontown, and the Syria Temple Shrine.

In addition to his wife, Genevieve Ross of Waynesburg, he is survived by two sisters, Mrs. Earl (Margaret) Burnham and Mrs. Thurman (Edna) Titus, both of Carmichaels; and several nieces and nephews.

## Dr. Anthony Ames

Dr. Anthony (Tony) Ames, 27, of Spraggs R.D. 1, died at 10:01 a.m. Sunday, August 15, 1982, in Ewing Township, Mercer County, N.J. as the result of injuries received in a plane crash.

He was born November 8, 1954, in Pittsburgh to Elmer and Genevieve Kaminski Ames, who survive.

His early life was spent in the Pittsburgh area and the past 21 years in Spraggs. He was a 1972 graduate of Waynesburg Central High School and received his bachelor of arts degree in chemistry from West Virginia University in 1976.

He also studied organic chemistry at the National Institute of Health and was a post-doctoral research fellow at Columbia University under Dr. Clark Still. He received his doctorate degree in organic chemistry from the University of Pittsburgh in 1980.

He was employed by Merck, Sharpe and Dohme in Dolestown. He was a member of St. Ann's R.C. Church in Waynesburg.

Also surviving are a sister, Mrs. Frederick (Laura) Kerns of Summerville, W.Va. and three brothers, Ronald of Charlotte, N.C.; Michael and Gary of Spraggs R.D.1.

Funeral arrangements in charge of the Glise E. Mariner and Samuel A. Milliken Funeral Home, North Maiden Street, Waynesburg, are incomplete.

The family suggests contributions to the Dr. Anthony Ames Memorial Fund, %First National Bank & Trust Co., Waynesburg.

## Mary Kochis Darney

Mary Kochis Darney, 87, of Fredericktown, died at 10:45 a.m. Tuesday, August 17, 1982, in Greene County Memorial Hospital.

She was born January 27, 1895, in Hungary.

She was a member of St. Michael's Roman Catholic Church of Fredericktown, and the Christian mothers of the church.

Mrs. Darney was a member of the ladies auxiliary of the Hanson-Cole American Legion Post 391 of Fredericktown, of which she was a gold star mother. She had been a resident of Fredericktown for the past 64 years.

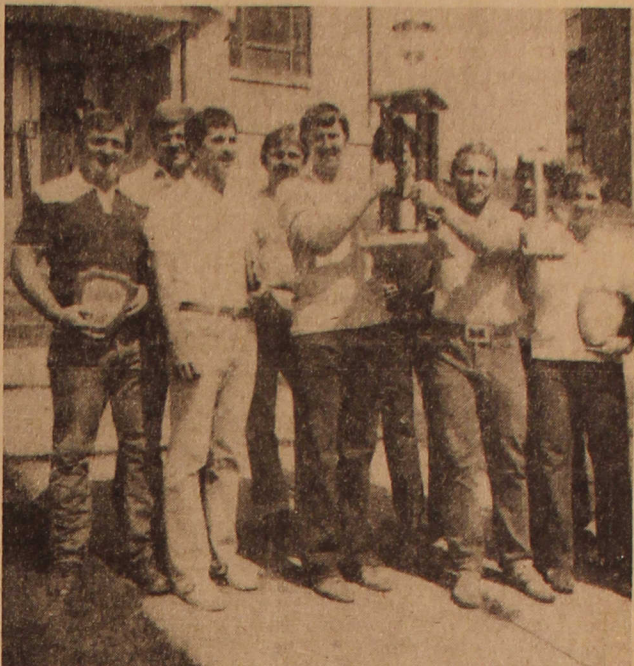
Surviving are two sons, Al Darney of Carmichaels and William Darney of Beallsville; a sister, Elizabeth Slaboda of Bridgeton, N.J.; seven grandchildren, and 10 great-grandchildren.

Her husband, Joseph P. Darney died July 2, 1971. A son, Steven J. Darney, was killed in action in World War II in 1944 and another son, Boyde Darney, died February 1, 1967.

## Home Burgled

Nothing was reported taken in a burglary at the home of Sharon Roach of Mt. Morris R.D.1 on Aug. 9.

State police said burglars entered the mobile home through a bedroom window but left without removing anything. The incident occurred along LR 30018 in Perry Township.



First-place winners, from left, are Wayne Knisely, Ron Hixson, Ken Murray, Rodney Mushnok, Capt. Dan Shannon, briefing officer Louis Rodavich, Mark Skiles, Don Laurie, Gary Klinefelter.

# Cumberland's No. One Team Places In First

**CARMICHAELS** — The Cumberland Mine No. 1 team of U.S. Steel Mining Co. took first place in the Southwestern Pennsylvania Regional Mine Rescue contest Saturday with two discounts.

A close runner-up at second place with five discounts was Cumberland No. 2 team. Emerald Mine "B" team took third place and Clyde Mine of BCNR Mining Corp. took fourth place.

The contest lasted for five hours with 19 teams completing problems at simulated underground mines and written exams. Three teams from out of the region were not in competition.

The winning team received a first-place trophy from the Keystone Bituminous Coal Association, presented by Sara L. Ruth, president of the King Coal Association. Plaques from the United Mine Workers of America were presented by Marty Connor.

A special honorary trophy was presented by Roy Franklin, superintendent of employee relations, Frick District, to mark the 100th anniversary of the Frick District.

Second-place trophy was presented by Joe Kaminsky on behalf of CSE Mine Services; third-place trophy by Earl Carruthers, from National Mine Services; and fourth-

place trophy by Ron Black, from Mine Safety Appliances.

Team members for the four teams are:

✓ Cumberland No. 1 — Wayne Knisley, Ron Hixson, Ken Murray, Rodney Mushnok, Dan Shannon, Louis Rodavich, Mark Skiles, Don Laurie, Gary Klinefelter.

✓ Cumberland No. 2 — Ken Titus, Emory Pelkey, Fred Waine, John Chambers, Gerald Patton, John Sismondo, Robert Bohach.

✓ Emerald Mine "B" — Larry Steinhoff, James Gifford, Celsus Worch, Gary Bochna, Brad Miller, Tom Robbins, John Garcia, Ed McIntire.

✓ Clyde Mine — Max Zaksek, Tom Palya, Mike Giovanelli, Chuck Wilson, Jerry Hritz, Mike Gallaher, Wayne Workman.

Most of the teams competing Saturday will be giving a repeat performance this Saturday, Aug. 21, when the State Mine Rescue Meet contest will be held at the Carmichaels Area High School athletic field as the opening event for the State Bituminous coal Show.

At the state meet, 27 teams from central and western Pennsylvania will be competing at the simulated underground mines with problems to solve and written exams.

# Countian Killed In Plane Crash

**EWING TOWNSHIP, N.J.** — Anthony Ames, 26, son of Mr. and Mrs. Elmer Ames of the Brocktown area of Wayne Township, and two other men from New Jersey were killed in the crash of a single-engine plane near here Sunday morning.

Ames, a 1972 graduate of Waynesburg Central High School, was living in North Brunswick, N.J.

According to Associated Press reports, the plane hit some trees, crashed and exploded on the approach to Mercer County (N.J.) Airport.

Also killed in the crash were Roger Smolar, 39, and Thomas Edel, age unknown, both from Ewing Township.

A New Jersey police officer told The Associated Press the 1978 Beechcraft was approaching the airport when the occupants of the plane radioed the control tower and said they didn't think they could reach the runway. "When they were coming in, approaching the tower, they radioed, 'Mayday, mayday, losing power, we won't make it,'" the officer said.



Police and rescue workers examine remains of a light plane which crashed in the woods.

"It crashed right after they said they didn't think they'd make it," the officer told the AP. "It must have hit trees, caught fire and then exploded."

The plane had been scheduled to make a weekend, round trip to Lancaster and apparently crashed on the return trip. The bodies were taken to the Mercer County medical ex-

aminer's office. It was the first fatal crash at the airport since the facility opened in 1943.

It was not clear who was at the controls of the plane. Ames was a student pilot.

**The Electric Consumer's Corner**  
FEATURING THE CHIMS FAMILY

SAVE ON ELECTRIC BILLS. USE APPLIANCES WISELY.

OUR ELECTRIC METER'S REALLY HUMMING, FLO.

AND DADDY DOESN'T LIKE THE TUNE.

NO WONDER, WITH EVERYTHING RUNNING, WE'VE GOT TO USE OUR APPLIANCES WISELY.

WE? YEAH, THAT'LL MAKE THE METER HUM A DIFFERENT TUNE.

OH, GOODY!

HOPE IT HUMS "ROCK-A-BYE BABY." THAT'S MY ALL-TIME FAVORITE!

Save energy and money. Cook complete meals in the oven. Wash and dry only full loads of clothes or dishes. For most laundry loads, set the washer selector at cold or warm. And use cold-water detergents. Open refrigerator doors only when necessary. Turn off TV when no one's watching. The booklet, "100 ways to help control your electric bill," has more tips. For your free copy, contact the West Penn Power office serving your location. Or write to West Penn Power, c/o The Electric Consumer's Corner, Cabin Hill, Greensburg, PA 15601.

Horseshoe

In Finals

Horseshoe defeated Trempus Insurance 7-4 Wednesday to advance to the Greene County Men's Softball League playoff finals.

Toby Zappone and Rick Tekavec homered for Horseshoe. Alan Walker doubled for Trempus.

Glenn Yorko was the winning pitcher with Brian Ross taking the loss.

Group To Be Formed

WAYNESBURG - The Center of Washington County is sponsoring a woman's support group at Waynesburg that will meet from 6 to 8 p.m. every Tuesday.

The meetings will include group activities, speakers on various topics, and are invited to address the groups.

On meeting a month is used for crafts and field trips on scheduled for summer month meeting.

Messiah Hired As Assistant

WAYNESBURG - George Messich, former head football coach at Mapletown High School and a member of the University of Pittsburgh national championship team, was hired Tuesday night by the Central Greene School Board as an assistant football coach.

The board also named Curtis Griffin as the head junior high football coach. Griffin served as an assistant junior high coach last year.

Because no teachers applied for the position, the board hired James Garber as assistant junior high coach. Garber, a graduate of Waynesburg Central High School, is still a resident of the district.

Jeffrey Jones, 4075-5434-5883, Parcel No. 0512501-T, Trailer on Leased Land, on Charles Pletcher Prop., 1979-1981 Taxes, Approximate Usel Price - \$449.01.

John Jordan and Deborah Jordan, 56436 & 58884, Parcel No. 0534412-Land & Bldg., S/S of W. Bliss Lane, being Lot 126 Nemacolin Plan No. 1, 1980 & 1981 Taxes, Approximate Usel Price - \$325.85.

John Komunich, 51780-54152-56497-58958, Parcel No. 0514248-T, Trailer on Leased Land, on Charles Pletcher Prop., 1979-1981 Taxes, Approximate Usel Price - \$901.27.

John Jordan and Deborah Jordan, 56436 & 58884, Parcel No. 0534412-Land & Bldg., S/S of W. Bliss Lane, being Lot 126 Nemacolin Plan No. 1, 1980 & 1981 Taxes, Approximate Usel Price - \$325.85.

John Komunich, 51780-54152-56497-58958, Parcel No. 0514248-T, Trailer on Leased Land, on Charles Pletcher Prop., 1979-1981 Taxes, Approximate Usel Price - \$901.27.

John Komunich, 51780-54152-56497-58958, Parcel No. 0514248-T, Trailer on Leased Land, on Charles Pletcher Prop., 1979-1981 Taxes, Approximate Usel Price - \$901.27.

John Komunich, 51780-54152-56497-58958, Parcel No. 0514248-T, Trailer on Leased Land, on Charles Pletcher Prop., 1979-1981 Taxes, Approximate Usel Price - \$901.27.

John Komunich, 51780-54152-56497-58958, Parcel No. 0514248-T, Trailer on Leased Land, on Charles Pletcher Prop., 1979-1981 Taxes, Approximate Usel Price - \$901.27.

John Komunich, 51780-54152-56497-58958, Parcel No. 0514248-T, Trailer on Leased Land, on Charles Pletcher Prop., 1979-1981 Taxes, Approximate Usel Price - \$901.27.

John Komunich, 51780-54152-56497-58958, Parcel No. 0514248-T, Trailer on Leased Land, on Charles Pletcher Prop., 1979-1981 Taxes, Approximate Usel Price - \$901.27.

John Komunich, 51780-54152-56497-58958, Parcel No. 0514248-T, Trailer on Leased Land, on Charles Pletcher Prop., 1979-1981 Taxes, Approximate Usel Price - \$901.27.

John Komunich, 51780-54152-56497-58958, Parcel No. 0514248-T, Trailer on Leased Land, on Charles Pletcher Prop., 1979-1981 Taxes, Approximate Usel Price - \$901.27.

John Komunich, 51780-54152-56497-58958, Parcel No. 0514248-T, Trailer on Leased Land, on Charles Pletcher Prop., 1979-1981 Taxes, Approximate Usel Price - \$901.27.

John Komunich, 51780-54152-56497-58958, Parcel No. 0514248-T, Trailer on Leased Land, on Charles Pletcher Prop., 1979-1981 Taxes, Approximate Usel Price - \$901.27.

John Komunich, 51780-54152-56497-58958, Parcel No. 0514248-T, Trailer on Leased Land, on Charles Pletcher Prop., 1979-1981 Taxes, Approximate Usel Price - \$901.27.

John Komunich, 51780-54152-56497-58958, Parcel No. 0514248-T, Trailer on Leased Land, on Charles Pletcher Prop., 1979-1981 Taxes, Approximate Usel Price - \$901.27.

John Komunich, 51780-54152-56497-58958, Parcel No. 0514248-T, Trailer on Leased Land, on Charles Pletcher Prop., 1979-1981 Taxes, Approximate Usel Price - \$901.27.

John Komunich, 51780-54152-56497-58958, Parcel No. 0514248-T, Trailer on Leased Land, on Charles Pletcher Prop., 1979-1981 Taxes, Approximate Usel Price - \$901.27.

John Komunich, 51780-54152-56497-58958, Parcel No. 0514248-T, Trailer on Leased Land, on Charles Pletcher Prop., 1979-1981 Taxes, Approximate Usel Price - \$901.27.

John Komunich, 51780-54152-56497-58958, Parcel No. 0514248-T, Trailer on Leased Land, on Charles Pletcher Prop., 1979-1981 Taxes, Approximate Usel Price - \$901.27.

John Komunich, 51780-54152-56497-58958, Parcel No. 0514248-T, Trailer on Leased Land, on Charles Pletcher Prop., 1979-1981 Taxes, Approximate Usel Price - \$901.27.

John Komunich, 51780-54152-56497-58958, Parcel No. 0514248-T, Trailer on Leased Land, on Charles Pletcher Prop., 1979-1981 Taxes, Approximate Usel Price - \$901.27.

Public Notices

NOTICE OF 1982 PUBLIC DELINQUENT TAX SALE. To the owners of properties described in this notice, and to each person having such interests having such liens, tax judgments or municipal claims against such properties...

In accordance with the provisions of the Act of 1947, P.L. 136 and its amendments, known as the Real Estate Tax Sale Law, the following described properties will be offered by the Tax Claim Bureau of Greene County, Pennsylvania, on MONDAY, the 23rd day of SEPTEMBER, 1982, at 10:00 A.M., Daylight Savings Time, and continuing thereafter with adjournment to such other days and times as may be announced at the sale or subsequently advertised.

The purpose of said sale is to dispose of properties against which delinquent taxes remain unpaid, the taxes having become absolute, and the legal period of redemption expiring on July 1, 1982. The terms of said sale shall be as follows: to sale of the property shall be made unless a bid equal to the final up-to-bid is made. The approximate usel price is indicated as follows:

GREENE COUNTY TAX CLAIM BUREAU. Director. CARMICHAELS BOROUGH. C/o Mrs. Dorothy Bluff, Claim Nos. 54097 & 58519, Parcel No. 0201163, Land & Bldg., 204 E/S N. Market St., being Lot 37 Boro. Plan, 1980 & 1981 Taxes, Approximate Usel Price - \$548.45.

CUMBERLAND TOWNSHIP. James D. Ansell Jr. and Karen R. Ansell, Claim Nos. 53803-57195-59124, Parcel No. 0535408, Land & Bldg., S/S of Rosevelt Lane, being Lot 37, Nemacolin Plan No. 2, 1979-1980 & 1981 Taxes, Approximate Usel Price - \$783.55.

Lloyd L. Carter, Jr. and Deborah Lynn Carter, Claim Nos. 56263 & 58642, Parcel No. 0531212, Land & Bldg., E/S Unnamed St., Lot 7, 8 and 9 Downey Plan, 1980 & 1981 Taxes, Approximate Usel Price - \$1,274.24.

Dairy Barn, c/o John Bernardino, Claim Nos. 56305 & 58732, Parcel No. 0505127, Land & Bldg., E/S of T-302, 32,500 Ac., 1980 & 1981 Taxes, Approximate Usel Price - \$996.07.

Gerald Darrell, Claim Nos. 56308 & 58734, Parcel No. 0503197-T, Trailer on Leased Land, on Charles P. Solomon Prop. (now moved to Hogs Mobile Village and known as parcel No. 0503197-T), 1980 & 1981 Taxes, Approximate Usel Price - \$653.78.

Jerry Devo and Debra Devo, Claim Nos. 56309 & 58735, Parcel No. 0501253-Land & Bldg., N/S of L.R. 30025, 1,921 Ac., 1980 & 1981 Taxes, Approximate Usel Price - \$711.62.

Martin and Letitia Folan, Claim No. 56331, Parcel No. 0534588, Vacant Land, S/S of Hill Lane, being Lot 159 Nemacolin Plan No. 1, 1980 Taxes only, Approximate Usel Price - \$80.79.

Robert A. Harding, Claim Nos. 56373 & 58913, Parcel No. 0522323, Vacant Land, W/S of Maple Ave., being Lot 21 Renner Plan, 1980 & 1981 Taxes, Approximate Usel Price - \$102.97.

Marsha Hardy, Claim Nos. 56374 & 58912, Parcel No. 0514248-T, Trailer on Leased Land, on Charles Pletcher Prop., 1979-1981 Taxes, Approximate Usel Price - \$466.24.

Jeffrey Jones, Claim Nos. 54075-54435-58983, Parcel No. 0512501-T, Trailer on Leased Land, on Charles Pletcher Prop., 1979-1981 Taxes, Approximate Usel Price - \$449.01.

John Komunich, 51780-54152-56497-58958, Parcel No. 0514248-T, Trailer on Leased Land, on Charles Pletcher Prop., 1979-1981 Taxes, Approximate Usel Price - \$901.27.

John Komunich, 51780-54152-56497-58958, Parcel No. 0514248-T, Trailer on Leased Land, on Charles Pletcher Prop., 1979-1981 Taxes, Approximate Usel Price - \$901.27.

John Komunich, 51780-54152-56497-58958, Parcel No. 0514248-T, Trailer on Leased Land, on Charles Pletcher Prop., 1979-1981 Taxes, Approximate Usel Price - \$901.27.

John Komunich, 51780-54152-56497-58958, Parcel No. 0514248-T, Trailer on Leased Land, on Charles Pletcher Prop., 1979-1981 Taxes, Approximate Usel Price - \$901.27.

John Komunich, 51780-54152-56497-58958, Parcel No. 0514248-T, Trailer on Leased Land, on Charles Pletcher Prop., 1979-1981 Taxes, Approximate Usel Price - \$901.27.

John Komunich, 51780-54152-56497-58958, Parcel No. 0514248-T, Trailer on Leased Land, on Charles Pletcher Prop., 1979-1981 Taxes, Approximate Usel Price - \$901.27.

John Komunich, 51780-54152-56497-58958, Parcel No. 0514248-T, Trailer on Leased Land, on Charles Pletcher Prop., 1979-1981 Taxes, Approximate Usel Price - \$901.27.

John Komunich, 51780-54152-56497-58958, Parcel No. 0514248-T, Trailer on Leased Land, on Charles Pletcher Prop., 1979-1981 Taxes, Approximate Usel Price - \$901.27.

John Komunich, 51780-54152-56497-58958, Parcel No. 0514248-T, Trailer on Leased Land, on Charles Pletcher Prop., 1979-1981 Taxes, Approximate Usel Price - \$901.27.

John Komunich, 51780-54152-56497-58958, Parcel No. 0514248-T, Trailer on Leased Land, on Charles Pletcher Prop., 1979-1981 Taxes, Approximate Usel Price - \$901.27.

John Komunich, 51780-54152-56497-58958, Parcel No. 0514248-T, Trailer on Leased Land, on Charles Pletcher Prop., 1979-1981 Taxes, Approximate Usel Price - \$901.27.

John Komunich, 51780-54152-56497-58958, Parcel No. 0514248-T, Trailer on Leased Land, on Charles Pletcher Prop., 1979-1981 Taxes, Approximate Usel Price - \$901.27.

John Komunich, 51780-54152-56497-58958, Parcel No. 0514248-T, Trailer on Leased Land, on Charles Pletcher Prop., 1979-1981 Taxes, Approximate Usel Price - \$901.27.

John Komunich, 51780-54152-56497-58958, Parcel No. 0514248-T, Trailer on Leased Land, on Charles Pletcher Prop., 1979-1981 Taxes, Approximate Usel Price - \$901.27.

John Komunich, 51780-54152-56497-58958, Parcel No. 0514248-T, Trailer on Leased Land, on Charles Pletcher Prop., 1979-1981 Taxes, Approximate Usel Price - \$901.27.

John Komunich, 51780-54152-56497-58958, Parcel No. 0514248-T, Trailer on Leased Land, on Charles Pletcher Prop., 1979-1981 Taxes, Approximate Usel Price - \$901.27.

John Komunich, 51780-54152-56497-58958, Parcel No. 0514248-T, Trailer on Leased Land, on Charles Pletcher Prop., 1979-1981 Taxes, Approximate Usel Price - \$901.27.

John Komunich, 51780-54152-56497-58958, Parcel No. 0514248-T, Trailer on Leased Land, on Charles Pletcher Prop., 1979-1981 Taxes, Approximate Usel Price - \$901.27.

John Komunich, 51780-54152-56497-58958, Parcel No. 0514248-T, Trailer on Leased Land, on Charles Pletcher Prop., 1979-1981 Taxes, Approximate Usel Price - \$901.27.

John Komunich, 51780-54152-56497-58958, Parcel No. 0514248-T, Trailer on Leased Land, on Charles Pletcher Prop., 1979-1981 Taxes, Approximate Usel Price - \$901.27.

John Komunich, 51780-54152-56497-58958, Parcel No. 0514248-T, Trailer on Leased Land, on Charles Pletcher Prop., 1979-1981 Taxes, Approximate Usel Price - \$901.27.

Public Notices

UNKNOWN, Claim Nos. 56797 & 59242, Parcel No. 0507105, Vacant Land, E. of T-700, 25,280 Ac., 1980 & 1981 Taxes, Approximate Usel Price - \$100.00.

UNKNOWN, Claim Nos. 56798 & 59243, Parcel No. 0507106, Vacant Land, S. of Pa. L.R. 30025, 1,921 Ac., 1980 & 1981 Taxes, Approximate Usel Price - \$143.09.

UNKNOWN, Claim Nos. 56799 & 59244, Parcel No. 0507107, Vacant Land, N. of T-484, on Monon River, 14,000 Ac., 1980 & 1981 Taxes, Approximate Usel Price - \$120.50.

UNKNOWN, Claim Nos. 56800 & 59245, Parcel No. 0510217, Vacant Land, N/S of Mar. Keel, Unimproved Parcel, Ad. Houston Terrace Plan of Lots, 1980 & 1981 Taxes, Approximate Usel Price - \$227.41.

UNKNOWN, Claim Nos. 56801 & 59246, Parcel No. 0513104, Vacant Land, E. of Locust Alley, Part of Lot 38 Hart Plan of Paisley 2, 1980 & 1981 Taxes, Approximate Usel Price - \$95.42.

UNKNOWN, Claim Nos. 56802 & 59247, Parcel No. 0513135, Vacant Land, N/S of Apple Alley, Part of Lot 37 Hart Plan of Paisley 2, 1980 & 1981 Taxes, Approximate Usel Price - \$104.39.

UNKNOWN, Claim Nos. 56803 & 59248, Parcel No. 0512403, Vacant Land, W/S of Pa. L.R. 30025, 1,921 Ac., 1980 & 1981 Taxes, Approximate Usel Price - \$92.44.

UNKNOWN, Claim Nos. 56805 & 59249, Parcel No. 0519200, Vacant Land, N/S of First St., Cales Level Lawn Land & Bldg., E/S of T-302, 32,500 Ac., 1980 & 1981 Taxes, Approximate Usel Price - \$87.74.

UNKNOWN, Claim Nos. 56806 & 59250, Parcel No. 0519226, Vacant Land, E/S of North Ave., Lot 45 Cales Level Lawn Land & Bldg., E/S of T-302, 32,500 Ac., 1980 & 1981 Taxes, Approximate Usel Price - \$101.42.

UNKNOWN, Claim Nos. 56807 & 59249, Parcel No. 0519227, Vacant Land, W/S of North Ave., Lot 46 Cales Level Lawn Land & Bldg., E/S of T-302, 32,500 Ac., 1980 & 1981 Taxes, Approximate Usel Price - \$87.74.

UNKNOWN, Claim Nos. 56808 & 59252, Parcel No. 0522300, Vacant Land, S/S of Renner Plan, 1980 & 1981 Taxes, Approximate Usel Price - \$86.54.

UNKNOWN, Claim Nos. 56809 & 59251, Parcel No. 0522301, Vacant Land, W/S of Maple Ave., Lot 22 Renner Plan, 1980 & 1981 Taxes, Approximate Usel Price - \$80.79.

UNKNOWN, Claim Nos. 56810 & 59253, Parcel No. 0522302, Vacant Land, W/S of Maple Ave., Lot 23 Renner Plan, 1980 & 1981 Taxes, Approximate Usel Price - \$80.79.

UNKNOWN, Claim Nos. 56811 & 59254, Parcel No. 0522303, Vacant Land, W/S of Maple Ave., Lot 24 Renner Plan, 1980 & 1981 Taxes, Approximate Usel Price - \$80.79.

UNKNOWN, Claim Nos. 56812 & 59255, Parcel No. 0522304, Vacant Land, W/S of Maple Ave., Lot 25 Renner Plan, 1980 & 1981 Taxes, Approximate Usel Price - \$80.79.

UNKNOWN, Claim Nos. 56813 & 59257, Parcel No. 0522403, Vacant Land, W/S of 40 ft. St., Lot 93 Green Valley Plan, 1980 & 1981 Taxes, Approximate Usel Price - \$93.72.

UNKNOWN, Claim Nos. 56814 & 59258, Parcel No. 0522412, Vacant Land, E/S of Factory Ave., Lot 76 Green Valley Plan, 1980 & 1981 Taxes, Approximate Usel Price - \$93.72.

UNKNOWN, Claim Nos. 56815 & 59259, Parcel No. 0522413, Vacant Land, W/S of Maple Ave., Lot 75 Green Valley Plan, 1980 & 1981 Taxes, Approximate Usel Price - \$93.72.

UNKNOWN, Claim Nos. 56816 & 59260, Parcel No. 0522414, Vacant Land, E/S of Factory Ave., Lot 76 Green Valley Plan, 1980 & 1981 Taxes, Approximate Usel Price - \$93.72.

UNKNOWN, Claim Nos. 56817 & 59262, Parcel No. 0522438, Vacant Land, W/S of Maple Ave., Lot 32 Green Valley Plan, 1980 & 1981 Taxes, Approximate Usel Price - \$93.72.

UNKNOWN, Claim Nos. 56818 & 59263, Parcel No. 0522439, Vacant Land, W/S of Maple Ave., Lot 33 Green Valley Plan, 1980 & 1981 Taxes, Approximate Usel Price - \$93.72.

UNKNOWN, Claim Nos. 56819 & 59264, Parcel No. 0522440, Vacant Land, W/S of Maple Ave., Lot 34 Green Valley Plan, 1980 & 1981 Taxes, Approximate Usel Price - \$93.72.

UNKNOWN, Claim Nos. 56820 & 59265, Parcel No. 0522441, Vacant Land, W/S of Maple Ave., Lot 35 Green Valley Plan, 1980 & 1981 Taxes, Approximate Usel Price - \$93.72.

UNKNOWN, Claim Nos. 56821 & 59266, Parcel No. 0522442, Vacant Land, W/S of Maple Ave., Lot 36 Green Valley Plan, 1980 & 1981 Taxes, Approximate Usel Price - \$93.72.

UNKNOWN, Claim Nos. 56822 & 59267, Parcel No. 0522443, Vacant Land, W/S of Maple Ave., Lot 37 Green Valley Plan, 1980 & 1981 Taxes, Approximate Usel Price - \$93.72.

UNKNOWN, Claim Nos. 56823 & 59268, Parcel No. 0522444, Vacant Land, W/S of Maple Ave., Lot 38 Green Valley Plan, 1980 & 1981 Taxes, Approximate Usel Price - \$93.72.

UNKNOWN, Claim Nos. 56824 & 59269, Parcel No. 0522445, Vacant Land, W/S of Maple Ave., Lot 39 Green Valley Plan, 1980 & 1981 Taxes, Approximate Usel Price - \$93.72.

UNKNOWN, Claim Nos. 56825 & 59270, Parcel No. 0522446, Vacant Land, W/S of Maple Ave., Lot 40 Green Valley Plan, 1980 & 1981 Taxes, Approximate Usel Price - \$93.72.

UNKNOWN, Claim Nos. 56826 & 59271, Parcel No. 0522447, Vacant Land, W/S of Maple Ave., Lot 41 Green Valley Plan, 1980 & 1981 Taxes, Approximate Usel Price - \$93.72.

UNKNOWN, Claim Nos. 56827 & 59272, Parcel No. 0522448, Vacant Land, W/S of Maple Ave., Lot 42 Green Valley Plan, 1980 & 1981 Taxes, Approximate Usel Price - \$93.72.

UNKNOWN, Claim Nos. 56828 & 59273, Parcel No. 0522449, Vacant Land, W/S of Maple Ave., Lot 43 Green Valley Plan, 1980 & 1981 Taxes, Approximate Usel Price - \$93.72.

UNKNOWN, Claim Nos. 56829 & 59274, Parcel No. 0522450, Vacant Land, W/S of Maple Ave., Lot 44 Green Valley Plan, 1980 & 1981 Taxes, Approximate Usel Price - \$93.72.

UNKNOWN, Claim Nos. 56830 & 59275, Parcel No. 0522451, Vacant Land, W/S of Maple Ave., Lot 45 Green Valley Plan, 1980 & 1981 Taxes, Approximate Usel Price - \$93.72.

UNKNOWN, Claim Nos. 56831 & 59276, Parcel No. 0522452, Vacant Land, W/S of Maple Ave., Lot 46 Green Valley Plan, 1980 & 1981 Taxes, Approximate Usel Price - \$93.72.

Public Notices

UNKNOWN, Claim Nos. 56797 & 59242, Parcel No. 0507105, Vacant Land, E. of T-700, 25,280 Ac., 1980 & 1981 Taxes, Approximate Usel Price - \$100.00.

UNKNOWN, Claim Nos. 56798 & 59243, Parcel No. 0507106, Vacant Land, S. of Pa. L.R. 30025, 1,921 Ac., 1980 & 1981 Taxes, Approximate Usel Price - \$143.09.

UNKNOWN, Claim Nos. 56799 & 59244, Parcel No. 0507107, Vacant Land, N. of T-484, on Monon River, 14,000 Ac., 1980 & 1981 Taxes, Approximate Usel Price - \$120.50.

UNKNOWN, Claim Nos. 56800 & 59245, Parcel No. 0510217, Vacant Land, N/S of Mar. Keel, Unimproved Parcel, Ad. Houston Terrace Plan of Lots, 1980 & 1981 Taxes, Approximate Usel Price - \$227.41.

UNKNOWN, Claim Nos. 56801 & 59246, Parcel No. 0513104, Vacant Land, E. of Locust Alley, Part of Lot 38 Hart Plan of Paisley 2, 1980 & 1981 Taxes, Approximate Usel Price - \$95.42.

UNKNOWN, Claim Nos. 56802 & 59247, Parcel No. 0513135, Vacant Land, N/S of Apple Alley, Part of Lot 37 Hart Plan of Paisley 2, 1980 & 1981 Taxes, Approximate Usel Price - \$104.39.

UNKNOWN, Claim Nos. 56803 & 59248, Parcel No. 0512403, Vacant Land, W/S of Pa. L.R. 30025, 1,921 Ac., 1980 & 1981 Taxes, Approximate Usel Price - \$92.44.

UNKNOWN, Claim Nos. 56805 & 59249, Parcel No. 0519200, Vacant Land, N/S of First St., Cales Level Lawn Land & Bldg., E/S of T-302, 32,500 Ac., 1980 & 1981 Taxes, Approximate Usel Price - \$87.74.

UNKNOWN, Claim Nos. 56806 & 59250, Parcel No. 0519226, Vacant Land, E/S of North Ave., Lot 45 Cales Level Lawn Land & B